



フォートワース  
日本庭園

FORT WORTH  
JAPANESE  
GARDEN

By Beth Collins





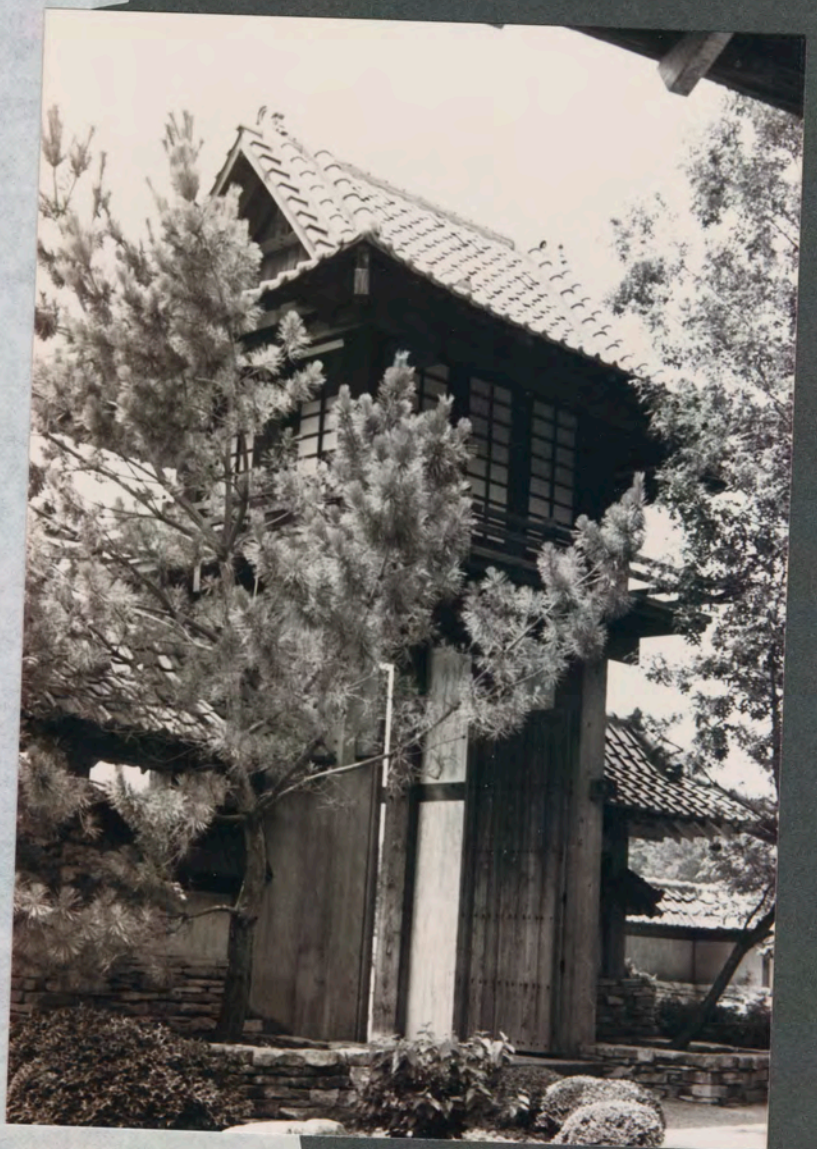
1. Main Entrance Gate and Courtyard
2. Ticket Office and Gift Shop
3. Meditation Garden
4. Hill Arbour
5. Moon Bridge
6. Mary K. Umstead Teahouse
7. Summer House
8. Moon Viewing Deck
9. Teahouse Complex
10. Checkerboard Bridge
11. Lake Arbour
12. Pagoda
13. Waterfall
14. Exit

- ★ Restrooms
- ▲ Fishfood Feeders

PARKING  
 3220 Botanic Garden Drive  
 Fort Worth, Texas 76107  
 817-870-7686



Entrance- The  
gardens' three  
gates are symbolic  
of heaven, man,  
and earth.









The "Meditation Garden" is of the same design as the great Ryoan-ji temple garden in Kyoto. The beauty of it is subtle but powerful, forming an outlook and inspiration for meditation.









This statue out-  
side of the  
"Meditation Garden"  
is much like the  
treasure houses  
for the possessions  
of Japanese families.









This bridge has been  
named "Moon Bridge".  
It gives a perfect view  
of the moon in the  
reflection of the  
water.









Stepping stones crossing  
the body of water  
which flows thru the  
Japanese Gardens.









A typical "Seahouse"  
extending out over the  
pool is a memorial to  
the late Mary K.  
Umstead, secretary  
of the Horticulture  
Division.











The "Moon Viewing Deck" is used for viewing the garden by moonlight.



The flat cone is symbolic of Mount Fuji.











The "Seahouse  
Complex" is found  
in the central  
area of the gardens.  
The complex is great  
for relaxing and  
viewing the garden.











Mandarin ducks  
can, at times, be  
seen in the garden  
pools. Their nest-  
ing houses are  
found in the middle  
pool below the  
teahouse complex.













The three wils.  
The monkeys are  
found on the steps  
in the gardens.  
They symbolize the  
three wils...  
"See no evil"  
"Speak no evil"  
"Hear no evil"









The "Pagoda", designed by Albert Komatsu & Associates, is a treasure house for storage of the Japanese family possessions.

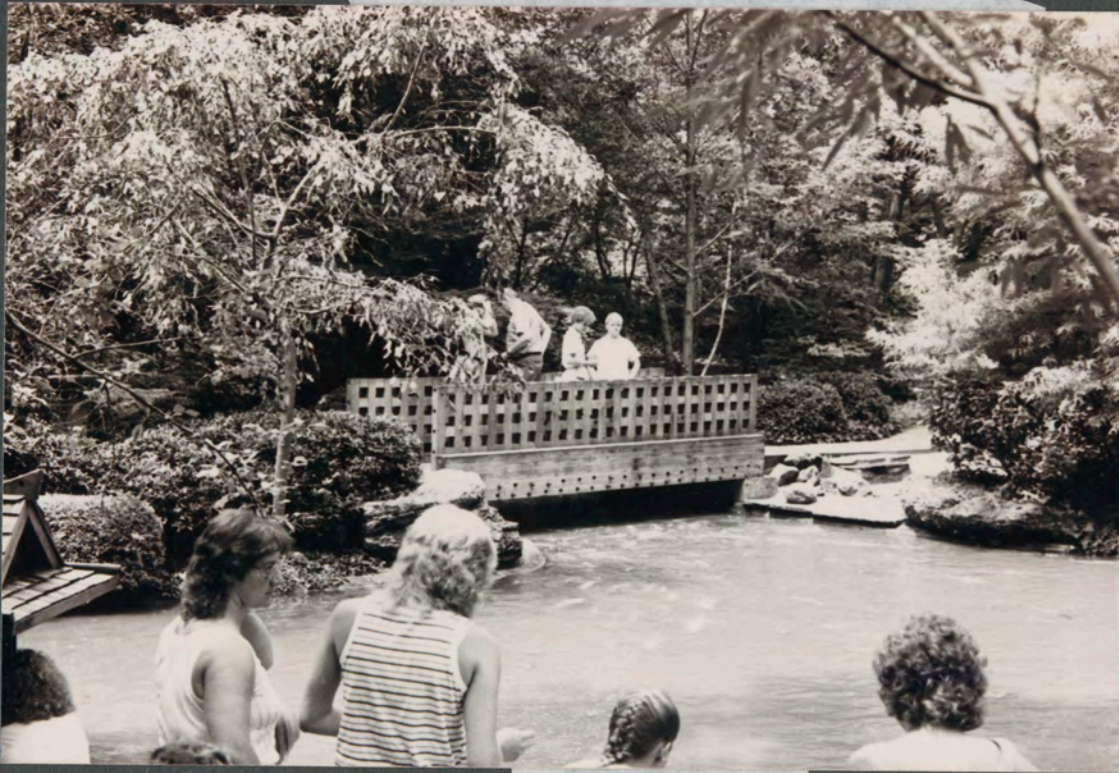








The "Checkerboard Bridge" is also an excellent place for viewing the garden and the fish in the pool below. The fish are Koi (Imperial Carp).



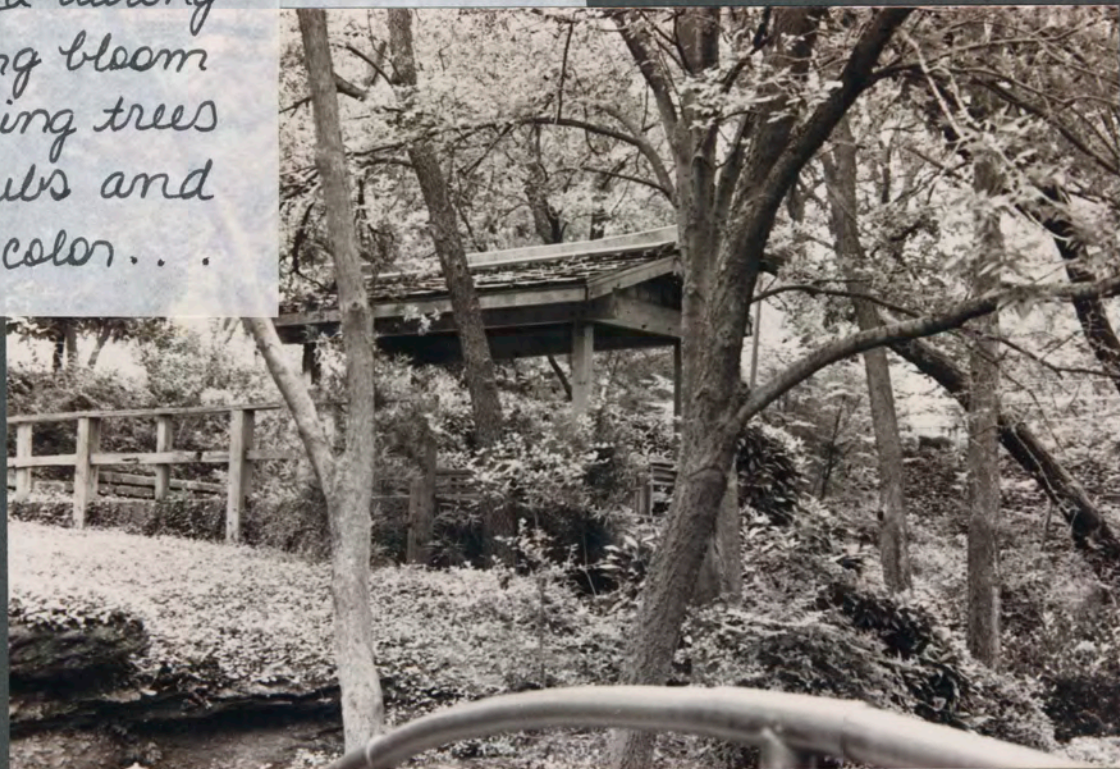








Nature is honored & revered through the use of trees, shrubs, stones, & water, beauty is created and serenity achieved. Color can be expected during the spring bloom of flowering trees and shrubs and the fall color...



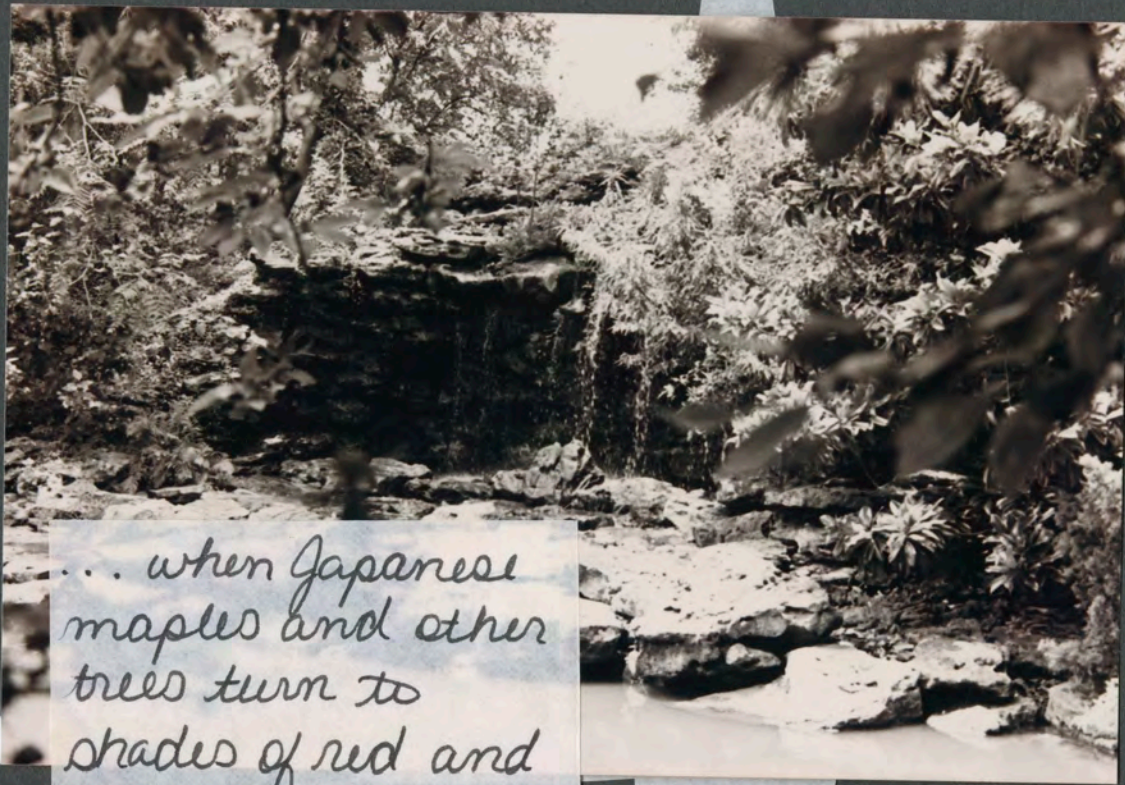












... when Japanese maples and other trees turn to shades of red and yellow. The quiet shades of green and various textures compose gardens' peacefulness.















Other scenes  
in the garden  
are the summer  
houses and the  
ducks found  
by a stream.  
There are several  
scenes such as  
these.













\* Note - the photographs were taken  
by Beth Collins in the Japanese  
Gardens on June 24, 1986. All infor-  
mation was taken from brochures  
collected at the gardens.