

Photographs



Post Complete



Part 1



Part 2



This book is equipped with the

HORN "Jiffy"

Instant Release, Expansion Post

Patent Applied For.

The posts are made in two parts as illustrated.

Part 1 is a hollow post with slots in one side.

Part 2 is a split post. The two divisions are sprung apart, and a small ridge made around the end of the post.

To operate, fit Part 2 into the hollow tube of Part 1, so that when the parts are put together, the catch on Part 2 will engage the slots on Part 1. This will lock the post at any desired length.

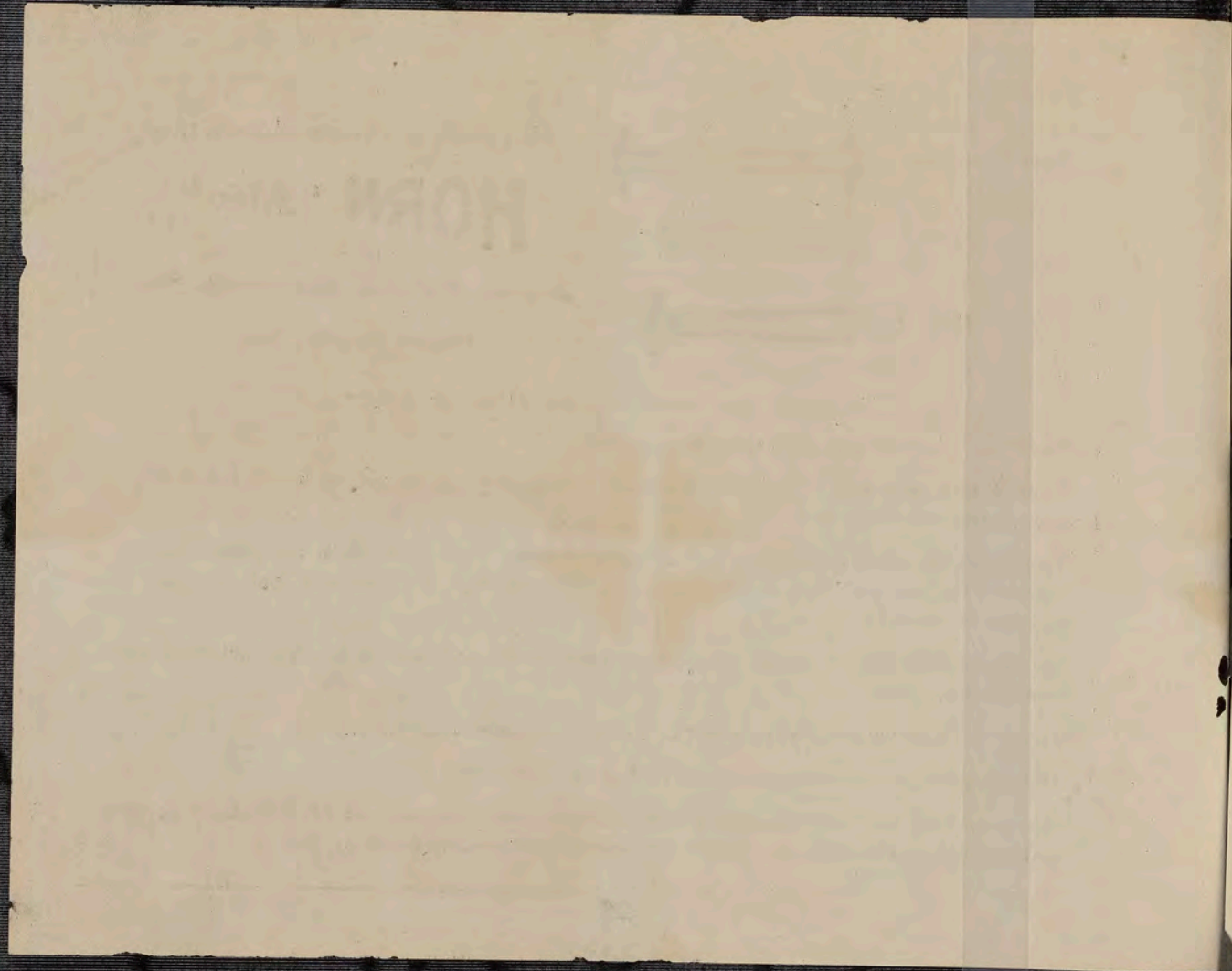
To unlock, turn part 2 about one-quarter turn, which will disengage lock and then pull straight out.

This is not a screw post, and cannot be locked or unlocked by turning only.

The one inch post will expand about $1\frac{7}{8}$ " or approximately 85%.

The Horn Post will bind the loose leaves firmly, so that they will not become loose or sag, and also allows the Horn *specialy processed* leaves to lie perfectly flat.

















HOLLYWOOD













EMERSON STUDIO
1914-1915

























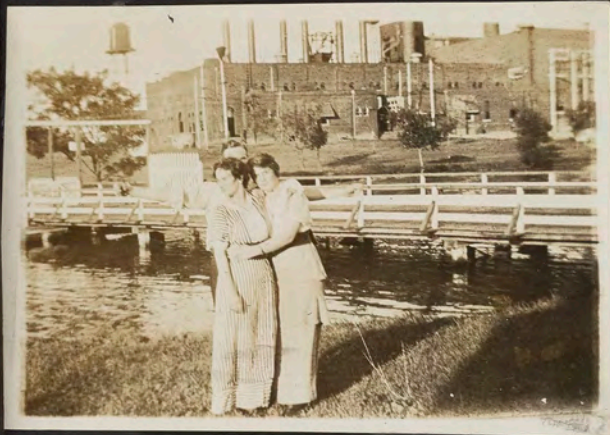




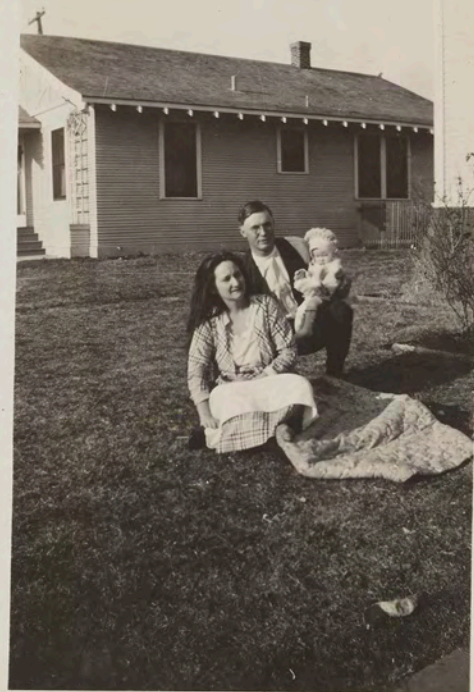


























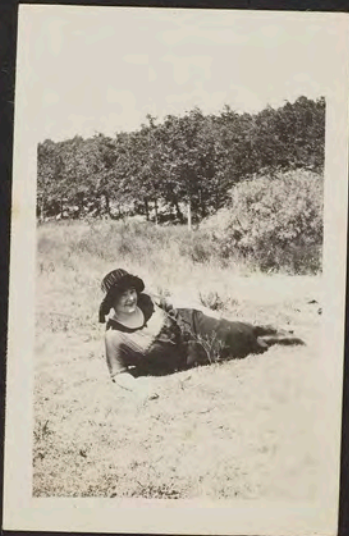














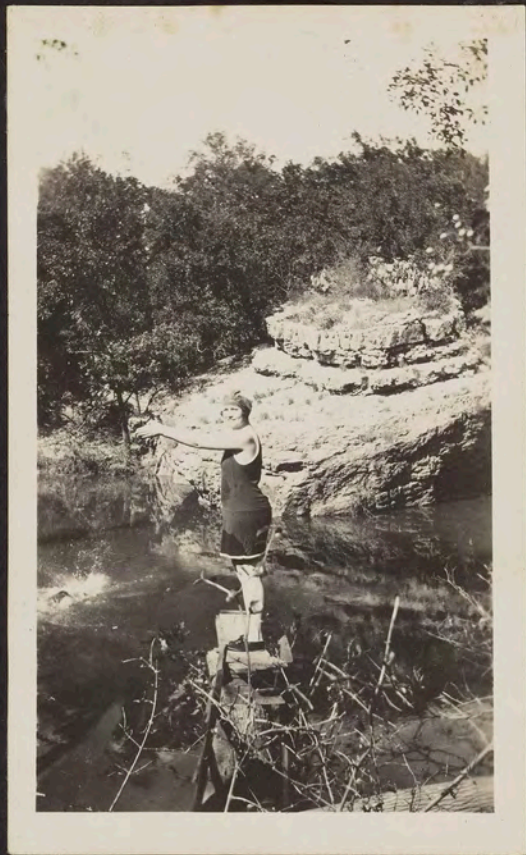
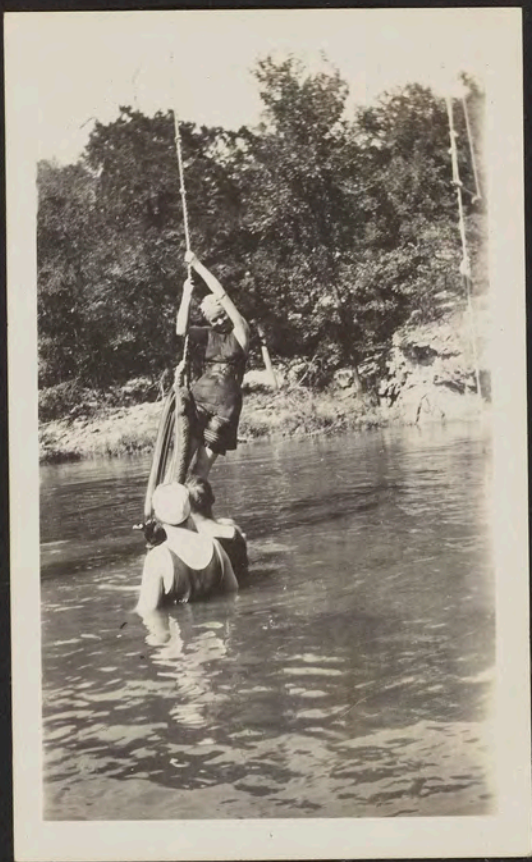
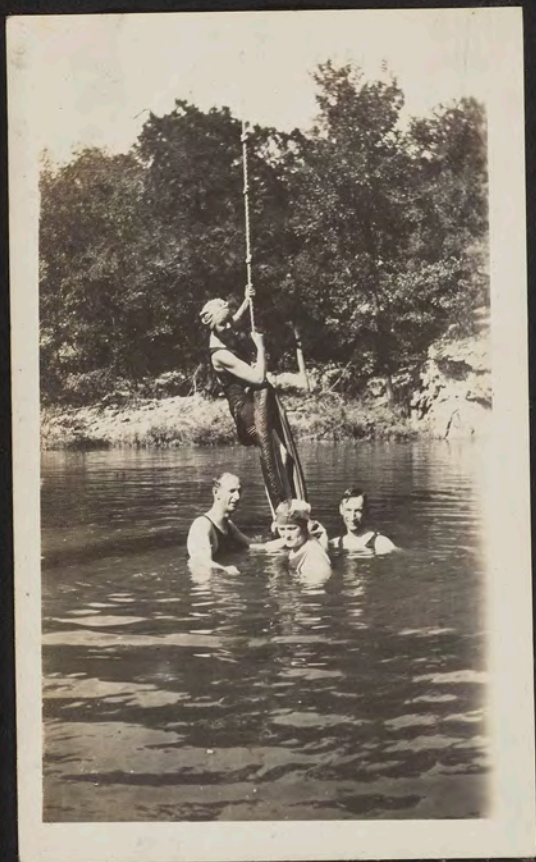


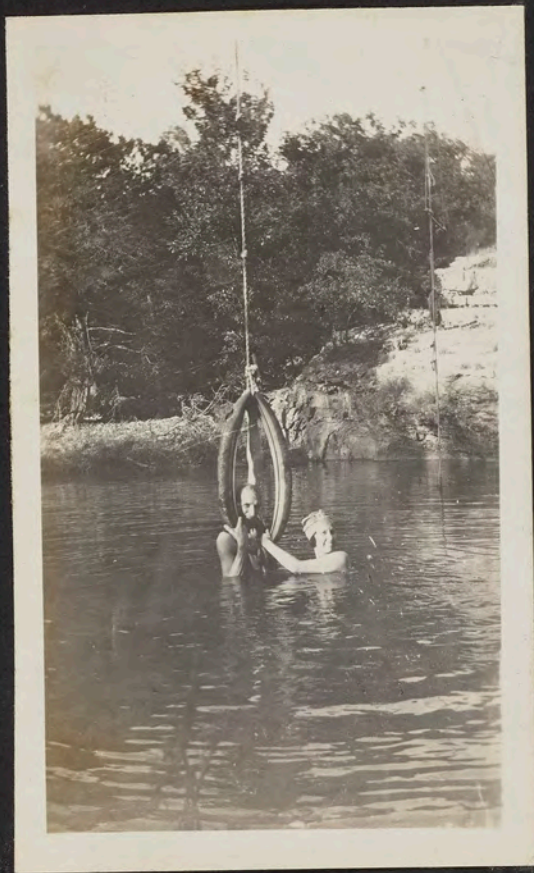


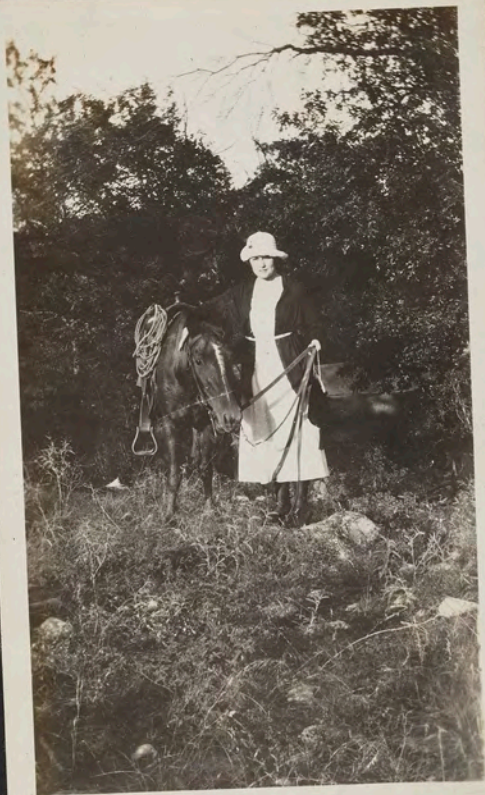


















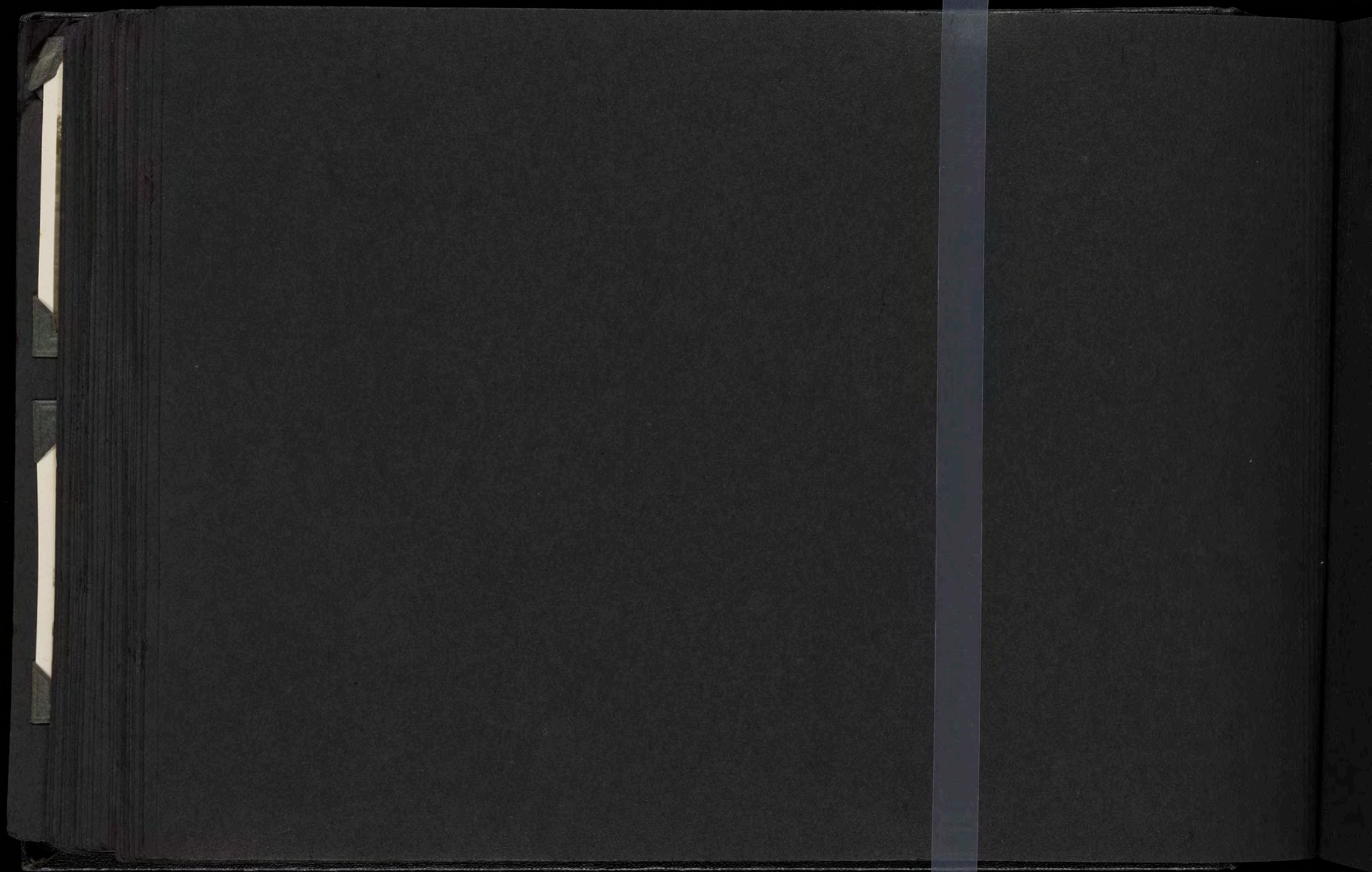












EST. HORN 1846

No. 5546 -

MADE IN U. S. A.

