





April

1950

Eichel



Nov. 19-44



L-445





Marie

GENUINE

Engel Pocket

Trade Mark Reg. "Art Corners" U. S. Pat. Off.

For Mounting
Snapshots, Post Cards,

STAMPS, "COVERS," ETC., IN ALBUMS OR ELSEWHERE.



Recall Past Pleasures

QUICK, NEATLY DONE - TIGHT OR REMOVABLE

10¢ BUYS 100

In Canada 15c

In England 8d.



MADE IN U. S. A.
EXCLUSIVELY BY
Engel Art Corners Mfg. Co.
CHICAGO
Printed in U. S. A.

ENGEL PATENTS:
U. S. 1799221 & 1852744
Pat. In Canada 1933
© by E. A. C. M. Co., 1932
International Copyright

WHAT FOLKS SAY ABOUT ENGEL ART CORNERS

"I purchased your Art Corners to mount a great many Kodak pictures and I am very pleased with the entire book. Heretofore I had pasted the pictures into the album and it is not nearly so satisfactory." M.K., Mich.

"I have been a user of your Art Corners for many years. Upon getting out an old snapshot album I find the first pictures with these corners are dated 1912. Not only have I used them but I have also informed my friends. Incidentally, I recently had occasion to suggest using them to fasten a graph on the wall. These corners answered the purpose very well." M.G., N.J.

"I am an enthusiastic user of Engel Pocket Art Corners and Engel Article Labels and wish to compliment you on your latest improvement in Art Corners. I like the idea of mounting the negative and print at the same time and it is such a comfort to know just where each negative is when wanted." Mrs. B.P., Mont.

"I have just bought three packages and my album looks very neat and many friends have told me how nice it looks." Mrs. O.A., Calif.

"Please find enclosed check for \$1.00 for which I wish you would send the following Art Corners. I used my first package of these corners the other day and am very much pleased with them." C.C.H., Ark.

"I have always found your Art Corners satisfactory - I therefore insist on Engel's always." G.W.S., Missouri.

"Art Corners and Articles are very useful to use in school, making little things such as pamphlets." B.W., Mississippi.

Be sure to ask for genuine
Engel Art Corners and Article Labels.

10¢ BUYS 100 OF A KIND



Engel Pocket "Art Corners"

CONTENTS

100

THIS
COLOR



will mount photos of all sizes, also post cards, cover specimens, clippings, samples, etc.

Tell your friends about them! They're great.

Directions:

Slip a Pocket Corner onto each corner of print, moisten gummed side and mount.

This allows print to be removed or replaced at will.

To hold print tight, slightly moisten tips of print as you attach the Corners. Then moisten gummed side and mount in album or elsewhere.

Look for the name Engel on every package to be sure of getting genuine Art Corners.

MADE IN:

Black	No. 101
White	" 102
Gray	" 103
Gold	" 105
Silver	" 106
Sepia	" 107
Red	" 108

10¢ Buys 100 of a kind!
15¢ in foreign lands

For neat, decorative effects use black, gray, gold, sepia or red Art Corners. Red ones are especially good for mounting pictures on letters or cards at Christmas or Valentine time.

Use white (No. 102) Art Corners to match the white borders of prints. They give the plain, invisible effect preferred by many.

Just try it.

TITLE OR DATE YOUR PHOTO PRINTS WITH

-Engel Article Labels-

Your pictures will tell the story better - and memories are refreshed that way. | 10c Buys 100 Articles

GENUINE

Engel Poc-ket

Trade Mark Reg. "Art Corners" U. S. Pat. Off.

For Mounting
Snapshots, Post Cards,

STAMPS, "COVERS," ETC., IN ALBUMS OR ELSEWHERE.



Recall Past Pleasures

QUICK, NEATLY DONE - TIGHT OR REMOVABLE

10¢ BUYS 100

In Canada 15c

In England 8d.

ENGEL PATENTS:
U. S. 1799221 & 1852744
Pat. in Canada 1933
© by E. A. C. M. Co., 1932
International Copyright



MADE IN U. S. A.
EXCLUSIVELY BY
Engel Art Corners Mfg. Co.
CHICAGO
Printed in U. S. A.

GENUINE

Engel Poc-ket "Art Corners"

The Mounting Method of Real Merit.

It provides a most satisfactory way of keeping negatives where they can easily be found when wanted for reprints!



By moistening two corners of print on print side, print will be tight, yet negative can be slipped in and out.

By leaving all corners of print dry, as Poc-kets are put on, both print and negative can be slipped in and out.

You'll be delighted with the versatility of

Engel Poc-kets.

Made in Chicago, U. S. A.

Come in black, white, gray, gold, silver, sepia and red - 10c buys 100 of a color.

At Photo, Stationery and Dept. Stores!

Printed in U. S. A.

Engel Poc-ket "Art Corners"

CONTENTS

100

THIS
COLOR

Engel
Poc-ket
"Art Corners"

Engel
Poc-ket
"Art Corners"

MADE IN:

Black	No. 101
White	" 102
Gray	" 103
Gold	" 105
Silver	" 106
Sepia	" 107
Red	" 108

will mount photos of all sizes, also post cards, cover specimens, clippings, samples, etc.

Tell your friends about them! They're great.

Directions:

Slip a Pocket Corner onto each corner of print, moisten gummed side and mount.

This allows print to be removed or replaced at will.

To hold print tight, slightly moisten tips of print as you attach the Corners. Then moisten gummed side and mount in album or elsewhere.

Look for the name Engel on every package to be sure of getting genuine Art Corners.

10¢ Buys 100 of kind!
15¢ in foreign lands

For neat, decorative effects use black, gray, gold, sepia or red Art Corners. Red ones are especially good for mounting pictures on letters or cards at Christmas or Valentine time.

Use white (No. 102) Art Corners to match the white borders of prints. They give the plain, invisible effect preferred by many.

Just try it.

TITLE OR DATE YOUR PHOTO PRINTS WITH

- Engel Arttitle Labels -

Your pictures will tell the story better - and memories are refreshed that way. | 10c Buys 100 Arttitles

Mom & Aunt Belle
Galveston



Margaret Braumell & Anna Marie



Eura Mae Haverkorn



Margaret & John Braumell



Aunt Belle
Margaret
Jimmy
Mom



Aunt Susie - Coy - Uncle Tom



Senora Breen - Forrest Whalin
Whalin



Clara Mae



Forrest



Anna Marie - Lenora



Ida Stamm - Iva Lee Jettan - 7/11/27



Iva Lee Jettan - 7/11/27



Major Field



Mrs. Field



Aunt Belle
Margaret
Jimmy
Mama



Carl McGill Rappo
Lia Lee Jettow
Aunt Marie



Aunt Susie
Louise
Nanna
Jimmy
Fritz
Dorcas



Cpl. Steve Onis
7 W 229

Walter Isaac
Donald Gill
Lt. White
(Fleet)



Cecil Mager
Rappaport
Elmore
Rappaport



Botanical Garden

Donald Gill



Seane - Meadowbrook Country Club



San Jacinto Monument - Margaret





Franksey
Cecil & more



Margaret John
California



Johnny
Anna Marie
Botanical Garden



Margaret - Anna Marie
Farrist Park

Lenora
Jonest



Anna Marie
Johnny



Bill Pressley
(Brother-in-law)

Antonia L.
Dallas, Tex.



Donna - Donna Jean
at Home - Course, Texas

Minor - Major

Anna Marie
(Backyard)



Margaret - San Jacinto Grounds



Meadowbrook Country Club



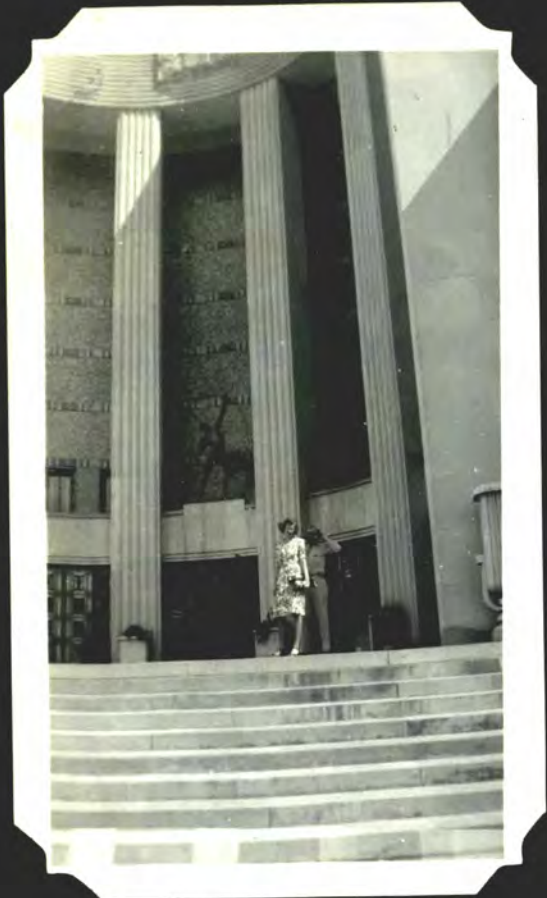
Fay

7 WAAF - Anna Marie + Gas Mask



Fay - Bell

Cpl. Flaum - Cpl. Jettin



Centennial - Dallas, Texas



Cpl. Blaum - Cpl. Jeltan
"Two Swell WSLs - 7 WSLF"

Jay - Florida



Gas Albert
Field



Very Funny



Jenny
Anna M.
Elmore



Eva Sue Sledge - Morgan

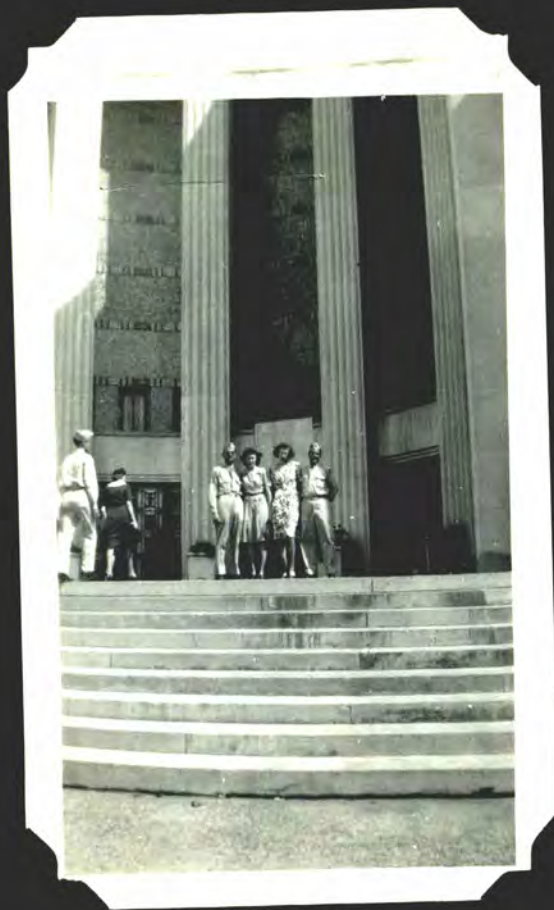


Eva M. - Galveston



Yv' Bussell - St.





Just Pals



Cecil - Elmore



















Probably
Douglas

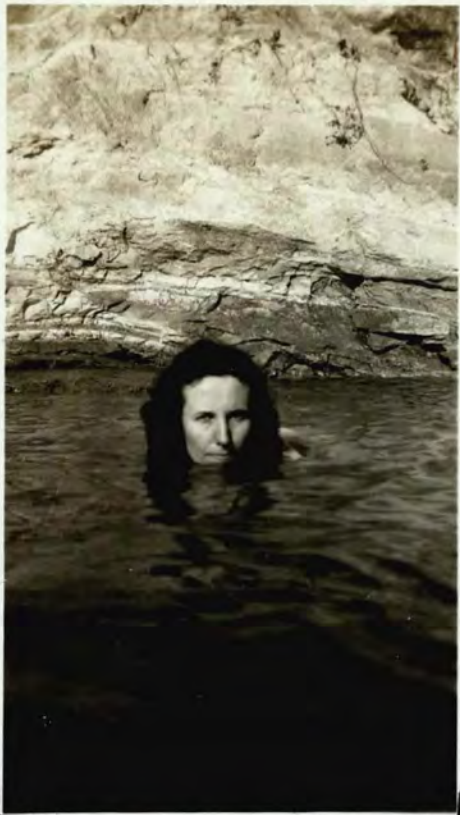
B21

VEE





























ac gang, F West Id, 1946

VELOX

288



Cora, Mr. Russell, Nettie, Dick + me.
1944, 7 Washfield.

VEL
2.38



Whse. gang at ac Supply,
Fwallfield, 1946

VELL
238





Season's Greetings
from Our House
to Your House



*Best wishes
from the
Hales*





40
Lt. Cohen
1946
Fruitland

5

232



VELOX

838

Lt. Paulk "a honey"
Supply, FWA Field, 1946

VELOX



Major Ives + Mr.
Carrington, 1946,
Fwaadld

232

S

VELO

10



POST CARD



CORRESPONDENCE

ADDRESS

Ana Marie
from Cay

A05



POST CARD

CORRESPONDENCE

ADDRESS



A 26





THE
**"LOST
WEEKEND"**

Mary, Jimmy, Marie

Unt



886

Auditors, Fweetfield,
1946

VELOX





V81

POST CARD

CORRESPONDENCE

ADDRESS

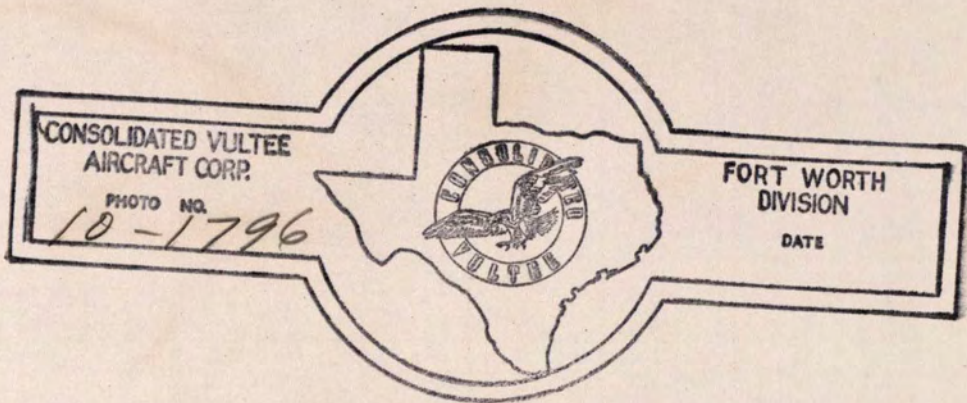




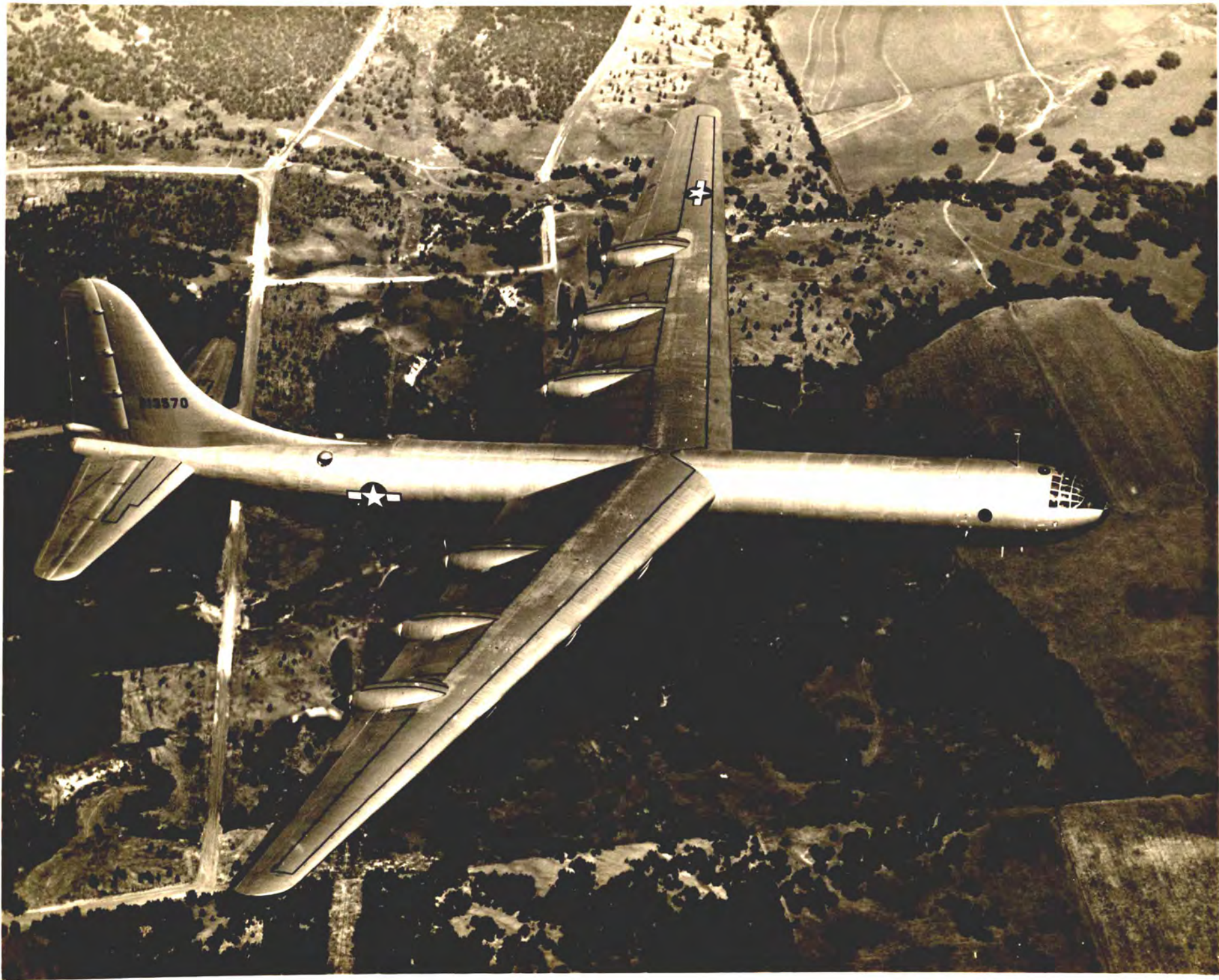
Long Beach



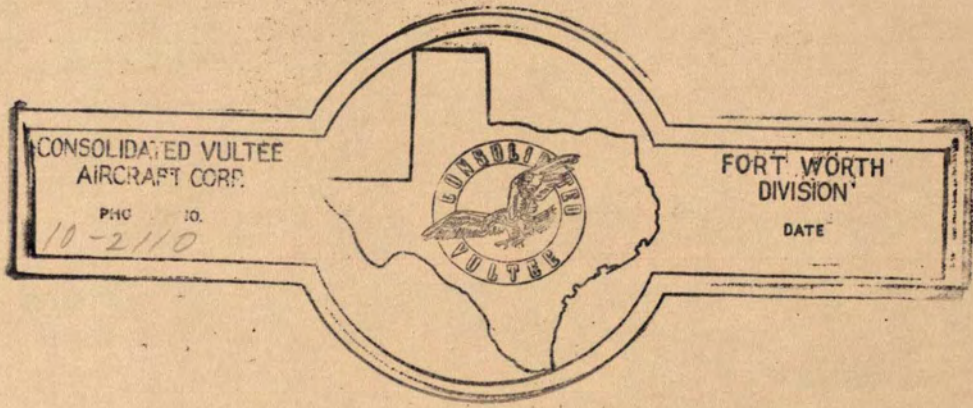




W. J. ...



O'Donnell



Housh Tube Album
/ 012
MENTONE
Artificial Leather Binding

ST. RIPPINGS
P. 8000
1 case

