

The image shows the lower legs and feet of three people walking away from the camera on a highly reflective, polished floor. The scene is backlit by a bright, low sun, creating a strong golden glow and long, dark shadows that stretch across the floor. The overall mood is contemplative and forward-moving.

Tarrant County  
Juvenile Services  
2013 Annual Report

## Table of Contents

Tarrant County Juvenile Board Members .....	1
Tarrant County Juvenile Services: Vision, Mission & Core Values .....	2
Overview of Tarrant County Juvenile Services.....	3
Tarrant County Juvenile Services Continuum of Services .....	4
Tarrant County Juvenile Services: Administration .....	5
Tarrant County Juvenile Services: Residential .....	6
Tarrant County Juvenile Services: Educational Services .....	7
Tarrant County Juvenile Services: Probation Services .....	8
Overview .....	9
Court Services .....	10
Referrals to Tarrant County Juvenile Services .....	11
Formal Referrals to Tarrant County Juvenile Services .....	11
Formalized Referral Trends 2009 to 2013 .....	13
Referral Trends 2001 to 2013 .....	14
Referral Demographic Information.....	15
Drug Offenses: 2004-2013 .....	16
Drug Testing .....	16
Supervision Average Daily Population .....	17
Average Caseload by Unit .....	17
Demographics of Youth Placed on Court-Ordered Probation .....	17
Demographics of Youth Placed on Deferred Prosecution Probation .....	19
Specialized Caseloads .....	21
Community Service & Restitution Project .....	21
Victim's Assistance Unit .....	22
Community Programs .....	23
Lynn W. Ross Juvenile Detention Center .....	24
Demographics of Admitted Youth .....	24
Juvenile Justice Alternative Education Program .....	26
Tarrant County Juvenile Services Source of Funds: Fiscal Year 2013 .....	29

## **Tarrant County Juvenile Board Members**

Honorable Nancy Berger - 322nd District Court

Honorable Wade Birdwell - 342nd District Court

Honorable Jean Boyd - 323rd District Court - Tarrant County Juvenile Judge

Honorable Robb Catalano - Criminal District Court No. 3

Honorable Randy Catterton. -231<sup>st</sup> District Court

Honorable John Chupp - 141st District Court

Honorable Don Cosby - 67th District Court

Honorable Ken Curry– 153<sup>rd</sup> District Court

Honorable David Evans - 48th District Court

Honorable George Gallagher - 396th District Court

Honorable Ruben Gonzalez, Jr. - 432nd District Court

Honorable William Harris - 233rd District Court

Honorable Jerome Hennigan - 324th District Court

Honorable Tom Lowe III - 236th District Court

Honorable Wayne Salvant - Criminal District Court No. 2

Honorable Michael Sinha - 360th District Court

Honorable Louis E. Sturns - 213th District Court

Honorable Bonnie Sudderth - 352nd District Court

Honorable Mike Thomas - Criminal District Court No. 4– Juvenile Board Chairman

Honorable R.H. Wallace - 96th District Court

Honorable Judith Wells – 325th District Court

Honorable Mollee Westfall - 371st District Court

Honorable Glen Whitley - Tarrant County Judge

Honorable Melody Wilkinson - 17th District Court

Honorable Sharon Wilson - Criminal District Court No.1

Honorable Scott Wisch - 372nd District Court

Honorable Everett Young - 297th District Court

Honorable Dana Womack- 348<sup>th</sup> District Court

## Tarrant County Juvenile Services: Vision, Mission & Core Values

# TARRANT COUNTY JUVENILE SERVICES

### Vision

A safe and healthy quality of life for our communities

### Mission

To operate a justice organization that supports victim rights and community safety while fostering productive, responsible behavior for youth and families.

### Core Values

**A**

**APPLICATION OF RESTORATIVE JUSTICE:** We provide fair and responsive treatment for victims of juvenile crime in a manner that affirms victims experience while addressing offender rehabilitation

**S**

**SERVICE TO THE COURT:** We serve the Court and execute its orders in a partnership involving the youth, family, probation officer, victim, and community;

**P**

**PARTNERSHIPS:** We partner with families, communities, and organizations to seek solutions to juvenile crime;

**I**

**INDIVIDUAL STRENGTH-FOCUSED APPROACH:** We implement probation strategies which support a youth's successful functioning in the community as well as personal accountability for injury caused; assist youth to recognize their value and identify personal strengths through interventions which build assets and increase capabilities; and help families support their children in overcoming barriers to growth and responsible behavior;

**R**

**RESPECT:** We act with sensitivity to racial, ethnic, cultural, familial, and offense diversity; provide services in a professional and ethical manner; and demonstrate appreciation and respect for all employees, recognizing that our mission is more important than role distinctions;

**E**

**EXCELLENCE:** We strive for excellence in service delivery by implementing evidence-based practices that are creative, flexible, innovative, technologically refined, and measured.

## Overview of Tarrant County Juvenile Services



Services are provided to juveniles under the authority of the Tarrant County Juvenile Board, which has designated the 323rd State District Court to serve as the Juvenile Court. The current presiding judge of the Juvenile Court is Judge Jean Boyd. Three associate judges assist Judge Boyd: Judge Tim Menikos, Judge Ellen Smith and Judge Kim Brown.

By statute, Tarrant County Juvenile Services is the agency designated to receive law enforcement reports of law violations defined either as delinquent conduct or conduct indicating a need for supervision allegedly committed by juveniles (children ages 10 through 16).

Delinquent conduct includes Class A & B misdemeanors as well as felony-grade offenses. Conduct indicating a need for supervision includes Class C misdemeanors transferred from a justice or municipal court and include public intoxication, truancy, running away, inhalant abuse, and violation of school disciplinary codes that result in expulsion.

Services performed include screening and diversion of cases to community resources, presenting objective reports to the court for use at disposition, executing court-ordered treatment and supervision, administering community corrections programs, securing alternative placement and administering collection of court-ordered probation fees and Tarrant County Juvenile Services has developed programs and operations with the goal of diverting youth from the juvenile justice system at the earliest appropriate point. The Juvenile Court endorses this belief by striving to identify the least restrictive environment for the care and rehabilitation of children while assuring community safety. To this end, Tarrant County Juvenile Services has developed a range of community and home-based programs as additional options in solving the problem of juvenile crime. Juvenile Services has the ability to offer a diverse continuum of services to youth and families of Tarrant County.

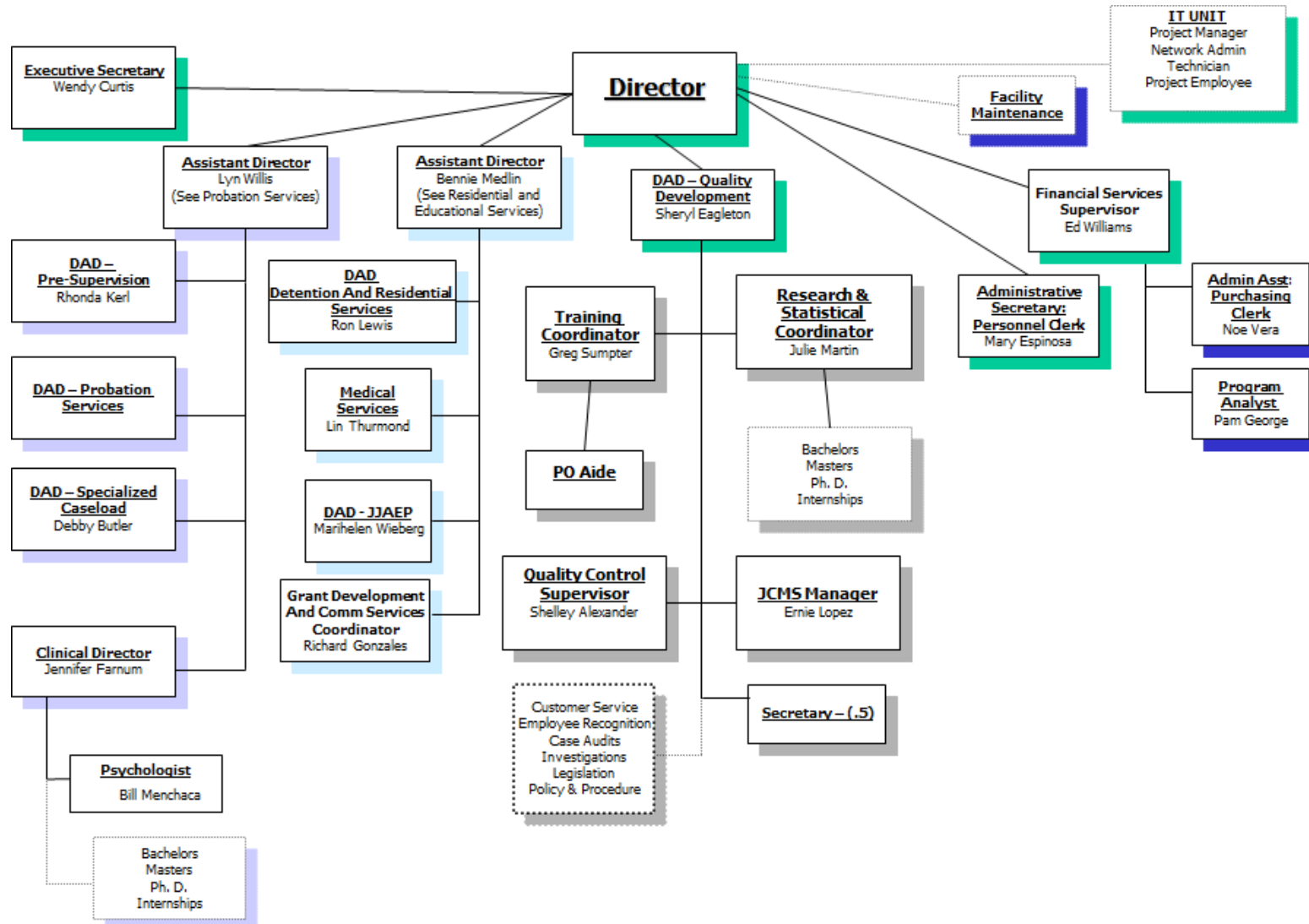
Tarrant County Juvenile Services operates the Juvenile Detention Center, which is a twenty-four hour secure facility for the temporary detention of juveniles for serious law violations. The goal of the center is to provide supervision, activities and counseling that will benefit each child during his stay. Services provided include educational, medical, recreational and life skills training as well as daily written observations of each child for use by the court.

2701 Kimbo Road Fort Worth, Texas 76111 817.838.4600  
<http://www.tarrantcounty.com/eJuvenile/site/default.asp>

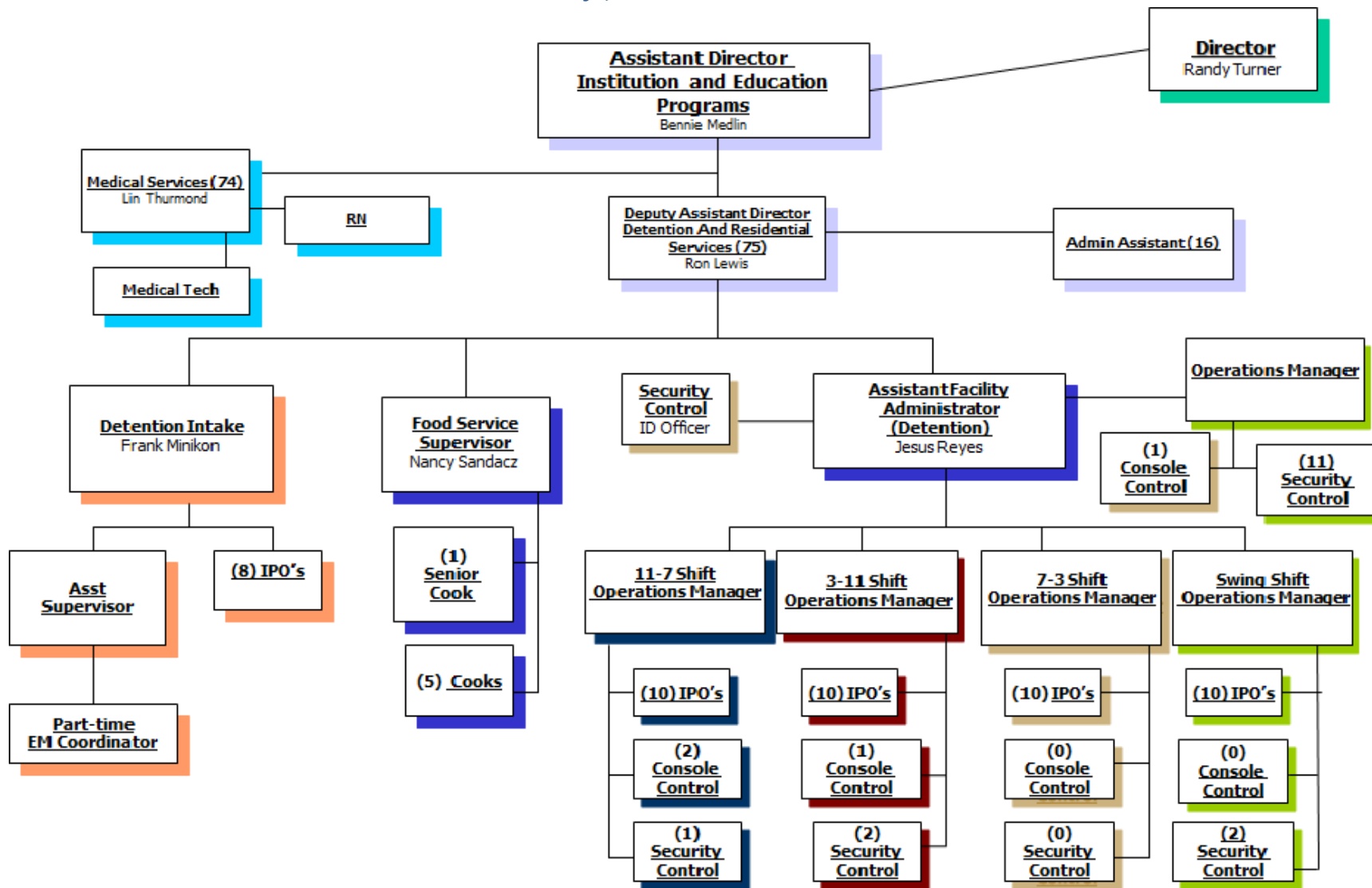
# Tarrant County Juvenile Services Continuum of Services



## Tarrant County Juvenile Services: Administration

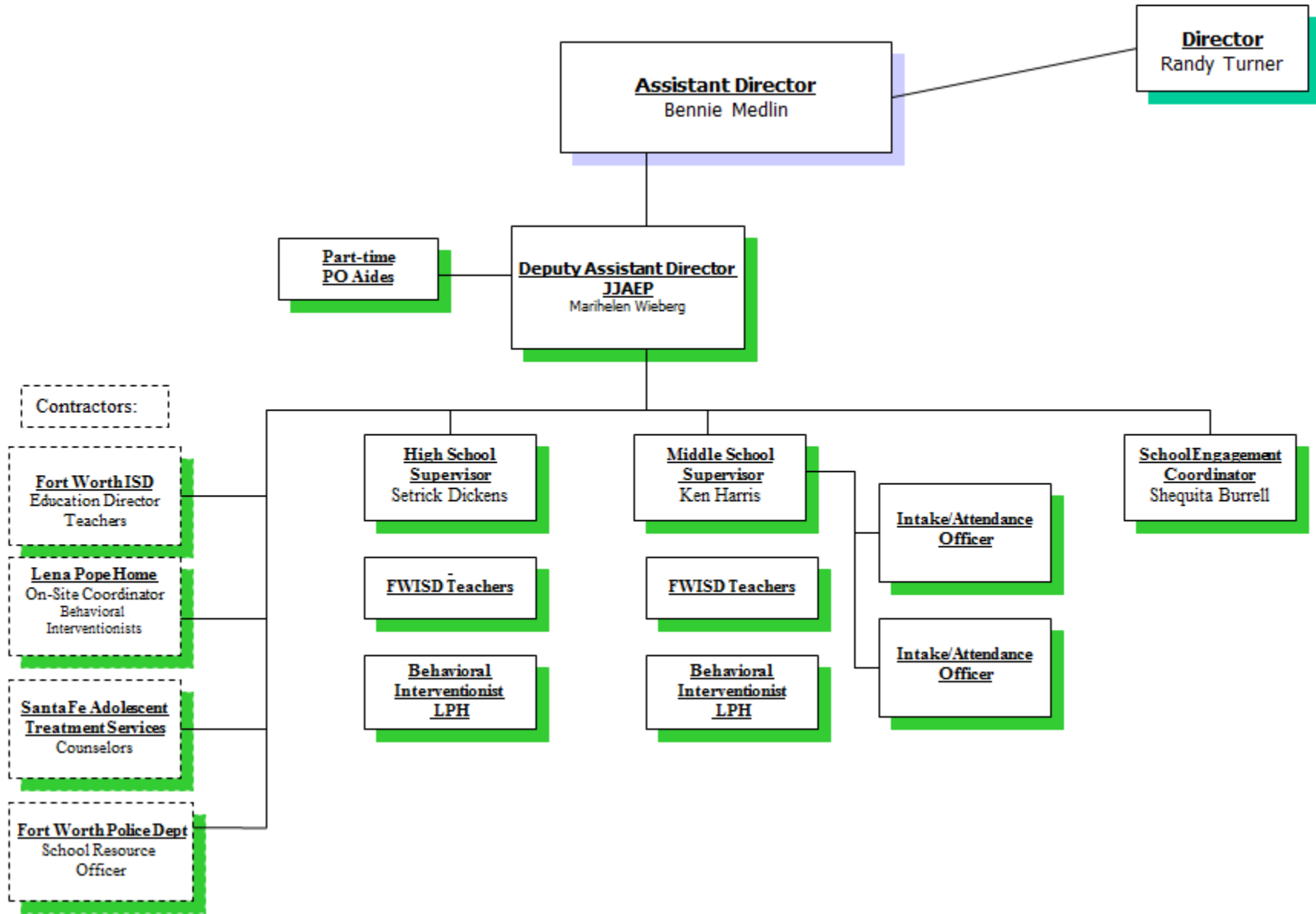


## Tarrant County Juvenile Services: Residential

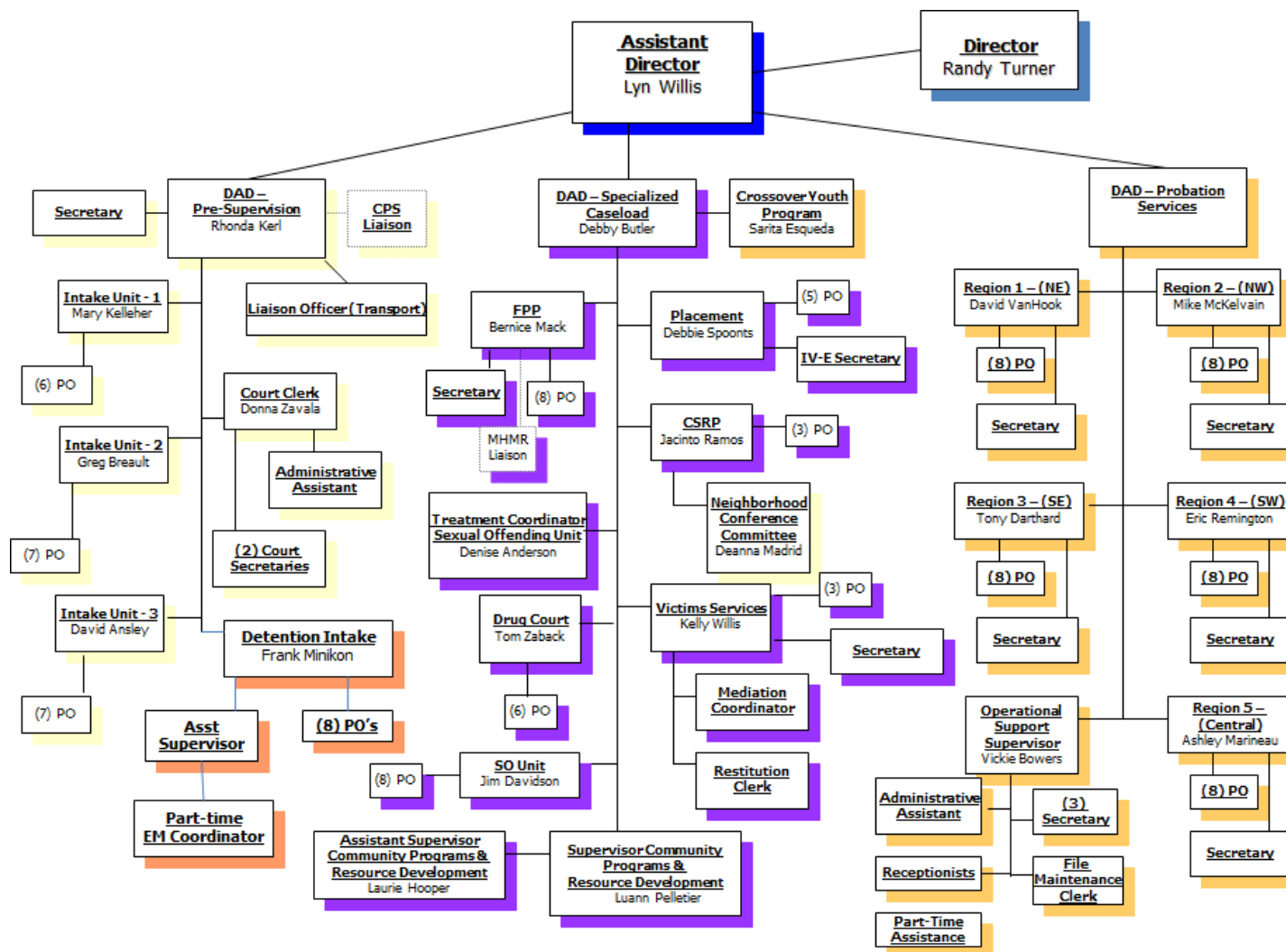




## Tarrant County Juvenile Services: Educational Services



## Tarrant County Juvenile Services: Probation Services



## Overview

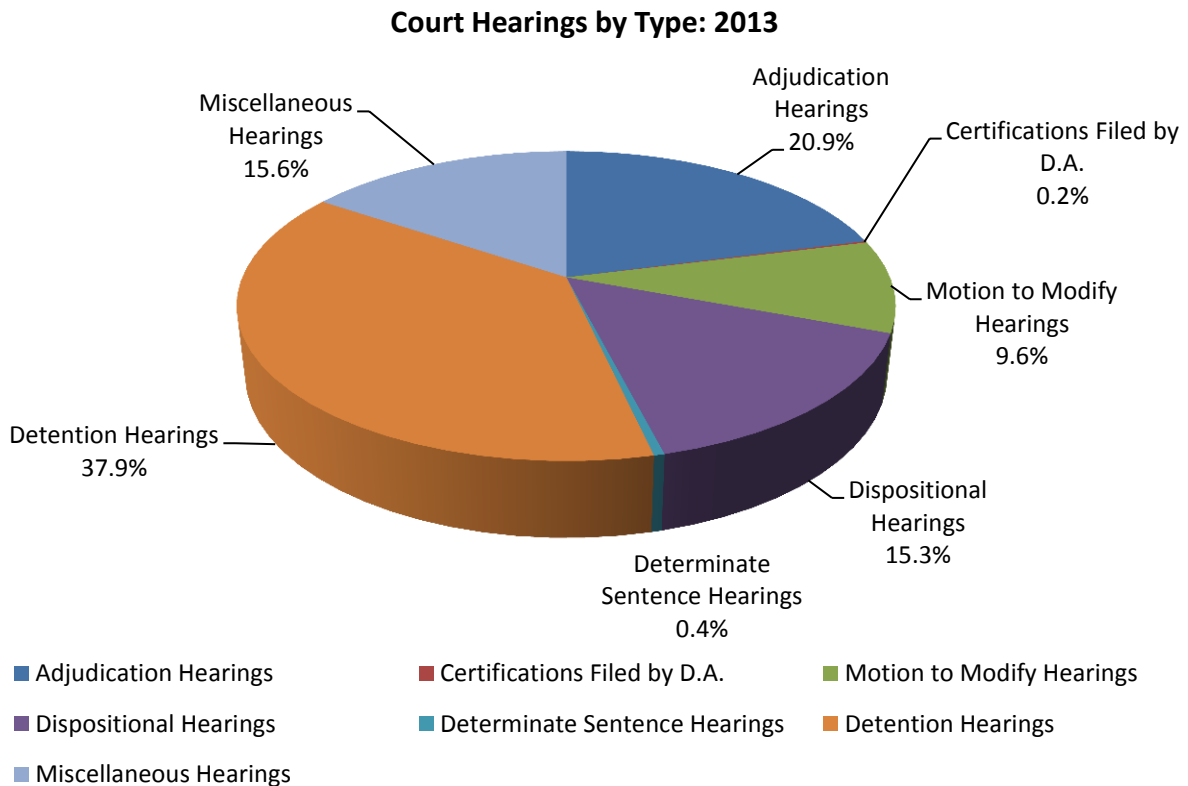
Total Number of Formal Referrals	3938
Total Number of Children Referred	2629
Referral Rate per 1,000 Juvenile Population Aged 10-16 (201,932) <sup>1</sup>	19.5
Total Number of Adjudications	778
Percent of Referrals resulting in an Adjudication	19.8%
Total Number of Adjudicated Youth	677
Total Number of Referrals w/ Court-Ordered Probation Dispositions	678
Total Number of Youth Placed on Court-Ordered Probation	606
Probation Rate per 100 Adjudications	87.15
Percent of Referrals resulting in Court-Ordered Probation	15.4%
Total Number of Deferred Prosecution Probation Dispositions	526
Total Number of Youth Placed on Deferred Prosecution Probation	498
Percent of Referrals placed on Deferred Prosecution Probation	13.4%
Total Number of Modifications	378
Percent of Referrals resulting in Modification	9.6%
Total Number of Texas Youth Commission Commitments	54
Total Number of Certifications	7

---

<sup>1</sup> Population projection based on 0.5 migration scenario as provided by the Texas State Demographer.

## Court Services

<b>ADJUDICATION HEARINGS CONVENED:</b>	1088
<b>DISPOSITIONAL HEARINGS:</b>	796
<b>MOTION TO MODIFY HEARINGS:</b>	500
<b>OTHER HEARINGS:</b>	
Detention Hearings	1973
Determinate Sentencing Hearings	23
Granted (20)	
Certifications filed by D.A.	8
Granted (7)	
Miscellaneous Hearings	811
<b>Total Hearings</b>	<b>5199</b>



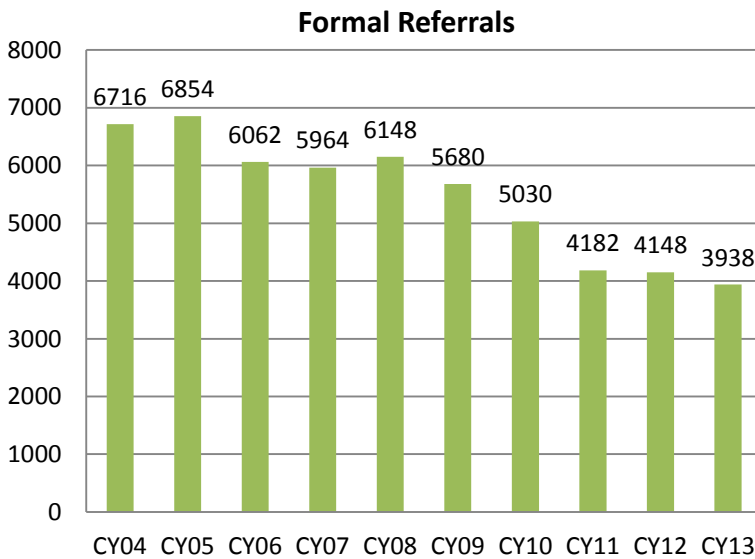
## Referrals to Tarrant County Juvenile Services

A referral occurs when a youth is brought to the department’s attention for alleged delinquent behavior (including both felony and misdemeanor referrals), violation of probation, or conduct indicating a need for supervision (CINS offense).

Referral Type	Frequency	Percentage
<b>Formal Referrals</b>		
Formalized	<b>2230</b>	<b>56.6%</b>
Paper Formalized	<b>1708</b>	<b>43.4%</b>
Total Formal Referrals	<b>3938</b>	<b>100.0%</b>
<b>Other Referrals</b>		
Interim/Interstate	<b>136</b>	
Contract Detention	<b>22</b>	
Other Administrative	<b>125</b>	
Paper Referrals Disposed as Paper	<b>251</b>	
Prevention Intervention	<b>52</b>	

## Formal Referrals to Tarrant County Juvenile Services

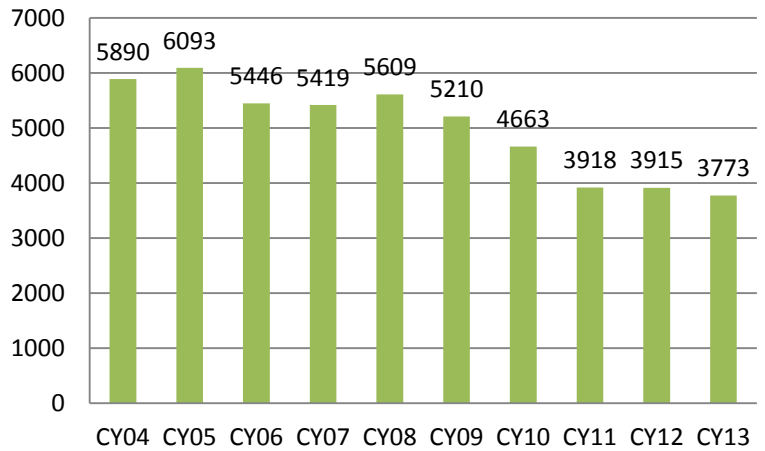
A referral is considered a formal referral when a face-to-face contact occurs between the youth and this department. The following figures reflect the total number of referrals and referral trends from 2004 through 2013.



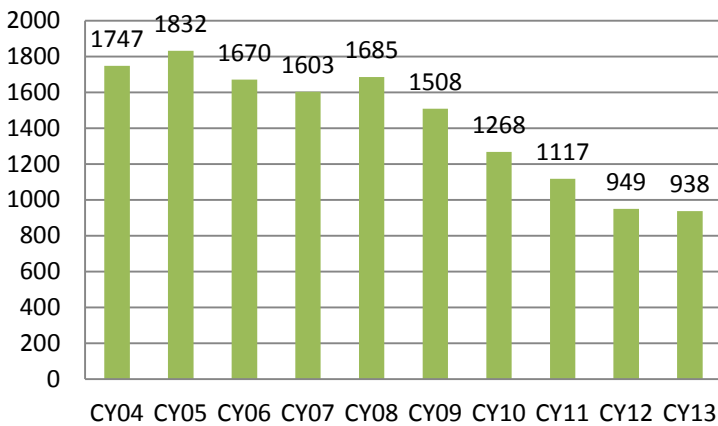
- The total number of formal referrals decreased by 41.4% from 2004 to 2013.
- In the last five years (2009-2013), the total number of formal referrals decreased by 30.7%.
- From 2012 to 2013, the total number of formal referrals decreased by 5.1%.

- Delinquent Referrals include all referrals for felonies, class A & B misdemeanors and violations of probation.
- The total number of delinquent referrals decreased by 35.9% from 2004 to 2013.
- In the last five years (2009-2013), the total number of delinquent referrals decreased by 27.6%.
- From 2012 to 2013, the total number of delinquent referrals decreased by 3.6%.

### Total Delinquent Referrals



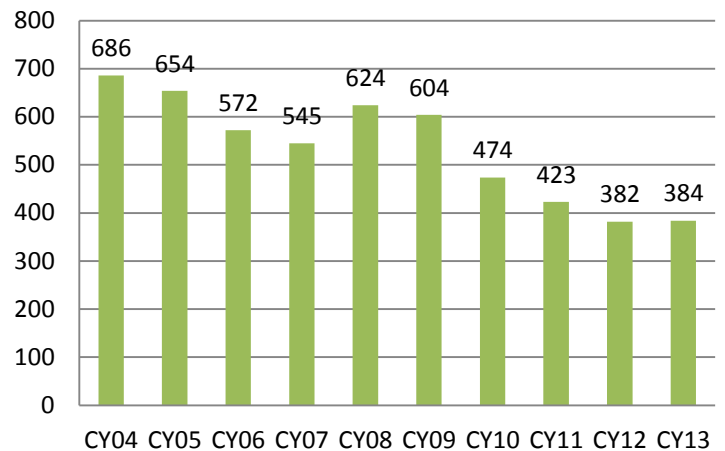
### Felony Referrals



- The total number of felony referrals decreased by 46.3% from 2004 to 2013.
- In the last five years (2009-2013), the total number of felony referrals decreased by 37.8%.
- From 2012 to 2013, the total number of felony referrals decreased by 1.2%.

- Violent felony referrals include the following offense categories: homicide, attempted homicide, sexual assault, robbery, aggravated assault.
- The total number of violent felony referrals decreased by 44.0% from 2004 to 2013.
- In the last five years (2009-2013) the total number of violent referrals has decreased by 36.4%.
- From 2012 to 2013, the total number of violent referrals has increased by <1%.

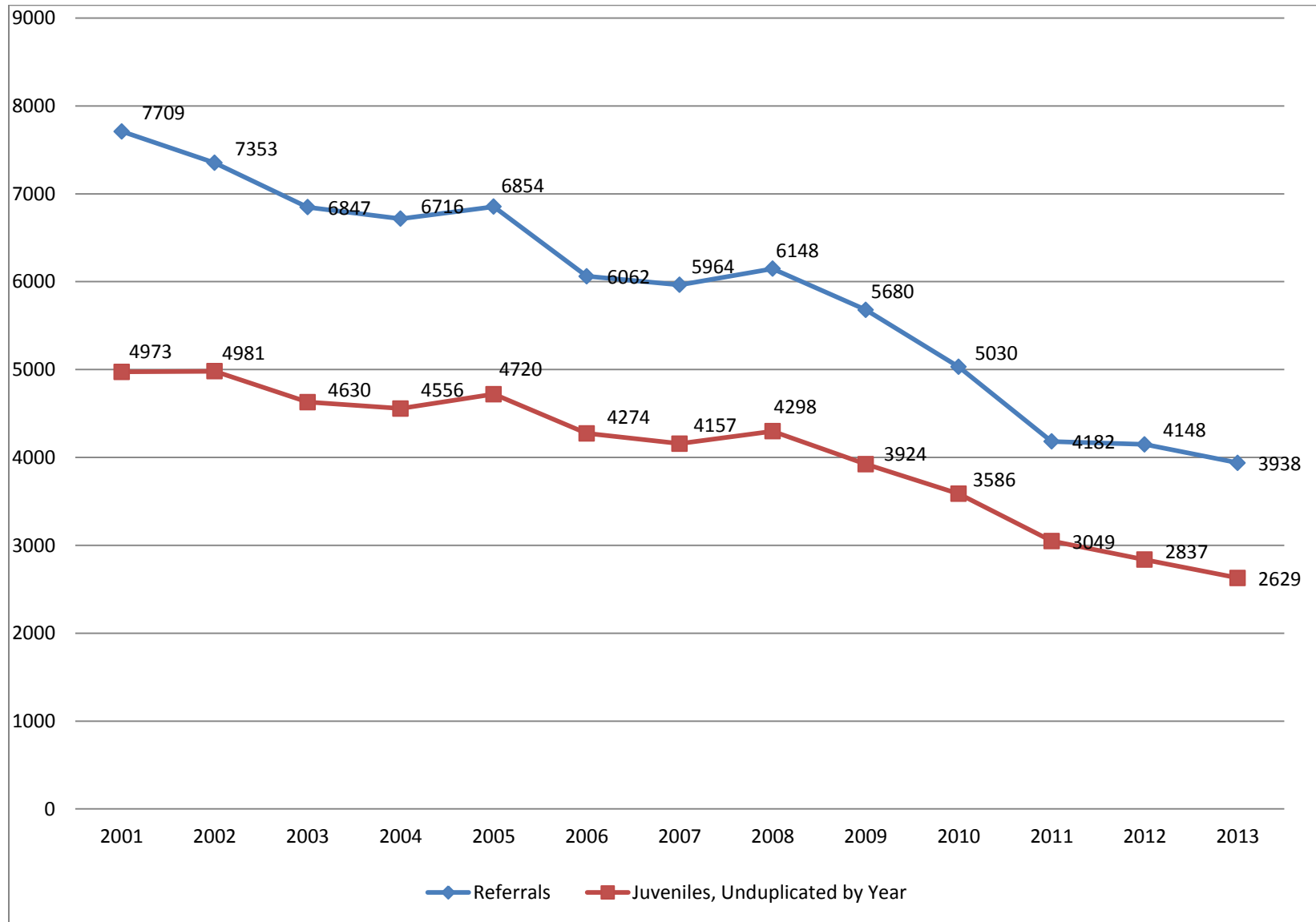
### Violent Felony Referrals



## Formalized Referral Trends 2009 to 2013

Felonies	2009	2010	2011	2012	2013	# Change 2012-2013	% Change 2012-2013
<b>Violent Referrals</b>							
Homicide	6	4	9	4	1	-3	75%(-)
Attempted Homicide	1	1	0	0	1	1	100%(+)
Sexual Assault, related	123	91	82	114	112	-2	2%(-)
Robbery	141	101	68	68	72	4	6%(+)
Aggravated Assault	324	276	261	194	195	1	<1%(+)
Other Violent	9	1	3	2	3	1	50%(+)
<b>Total Violent Referrals</b>	<b>604</b>	<b>474</b>	<b>423</b>	<b>382</b>	<b>384</b>	<b>2</b>	<b>&lt;1%(+)</b>
<b>Non-Violent Referrals</b>							
Burglary	369	335	312	249	229	-20	8%(-)
Theft	87	66	65	59	64	5	9%(+)
Motor Vehicle Theft/UUMV	52	40	36	33	39	6	18%(+)
Drug Offenses	114	135	118	84	71	-13	16%(-)
Weapons Violations	48	50	34	26	40	14	54%(+)
Other Felony	234	168	129	116	111	-5	4%(-)
<b>Total Non-Violent Referrals</b>	<b>904</b>	<b>794</b>	<b>694</b>	<b>567</b>	<b>554</b>	<b>-13</b>	<b>2%(-)</b>
<b>Total Felonies</b>	<b>1508</b>	<b>1268</b>	<b>1117</b>	<b>949</b>	<b>938</b>	<b>-11</b>	<b>1%(-)</b>
<b>Class A &amp; B Misdemeanors</b>							
Weapons Violations	39	51	26	14	15	1	7%(+)
Assault	705	667	610	630	570	-60	10%(-)
Theft	1026	892	620	560	662	102	18%(+)
Drug Offenses	539	567	480	453	439	-14	3%(-)
Other Misdemeanor	985	856	655	502	320	-182	36%(-)
Contempt of Court	7	19	13	8	11	3	38%(+)
<b>Total Class A &amp; B Misdemeanors</b>	<b>3301</b>	<b>3052</b>	<b>2404</b>	<b>2167</b>	<b>2017</b>	<b>-150</b>	<b>7%(-)</b>
<b>Total Violation of Probation</b>	<b>401</b>	<b>343</b>	<b>397</b>	<b>799</b>	<b>818</b>	<b>19</b>	<b>2%(+)</b>
<b>Total Delinquent Conduct Referrals</b>	<b>5210</b>	<b>4663</b>	<b>3918</b>	<b>3915</b>	<b>3373</b>	<b>-142</b>	<b>4%(-)</b>
<b>CINS Referrals</b>							
Truancy	7	10	0	0	0	0	-
Runaway	300	231	209	199	144	-55	28%(-)
Theft	10	0	0	2	2	0	-
Disorderly Conduct	2	1	2	1	0	-1	100%(-)
Inhalant Abuse	0	0	0	0	0	0	-
DUID	0	0	0	2	0	-2	>100%(-)
Liquor Laws	10	0	0	0	0	0	-
Expulsions	132	122	26	26	18	-8	31%(-)
Other	9	3	27	3	1	-2	67%(-)
<b>Total CINS Referrals</b>	<b>470</b>	<b>367</b>	<b>264</b>	<b>233</b>	<b>165</b>	<b>-68</b>	<b>29%(-)</b>
<b>Total Referrals</b>	<b>5680</b>	<b>5030</b>	<b>4182</b>	<b>4148</b>	<b>3938</b>	<b>-210</b>	<b>5%(-)</b>
<b>Total Juveniles</b>	<b>3924</b>	<b>3586</b>	<b>3049</b>	<b>2837</b>	<b>2629</b>	<b>-208</b>	<b>7.3%(-)</b>

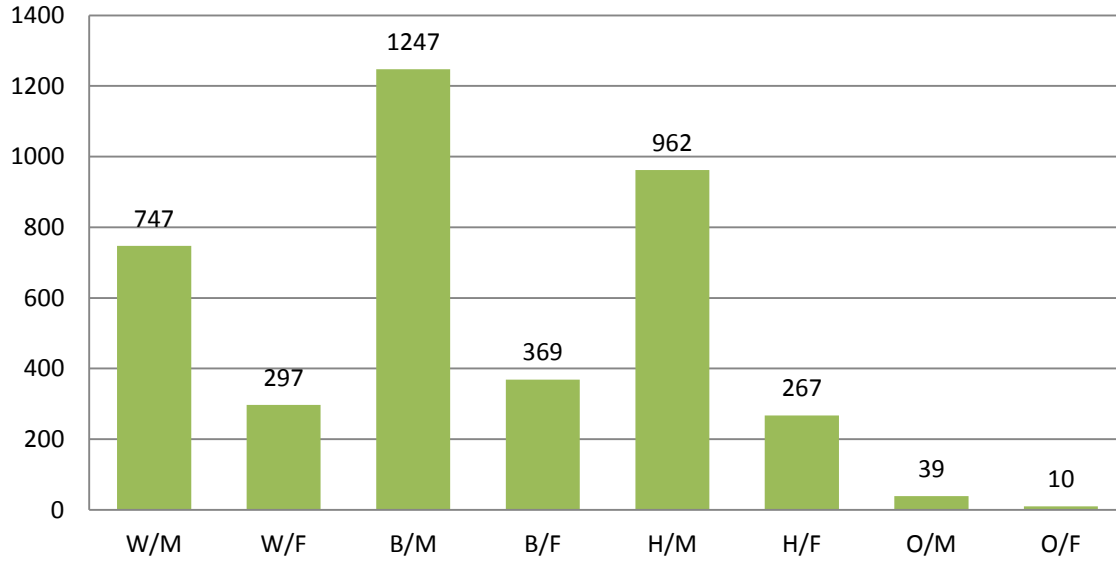
### Referral Trends 2001 to 2013





## Referral Demographic Information

### Referrals by Gender & Race

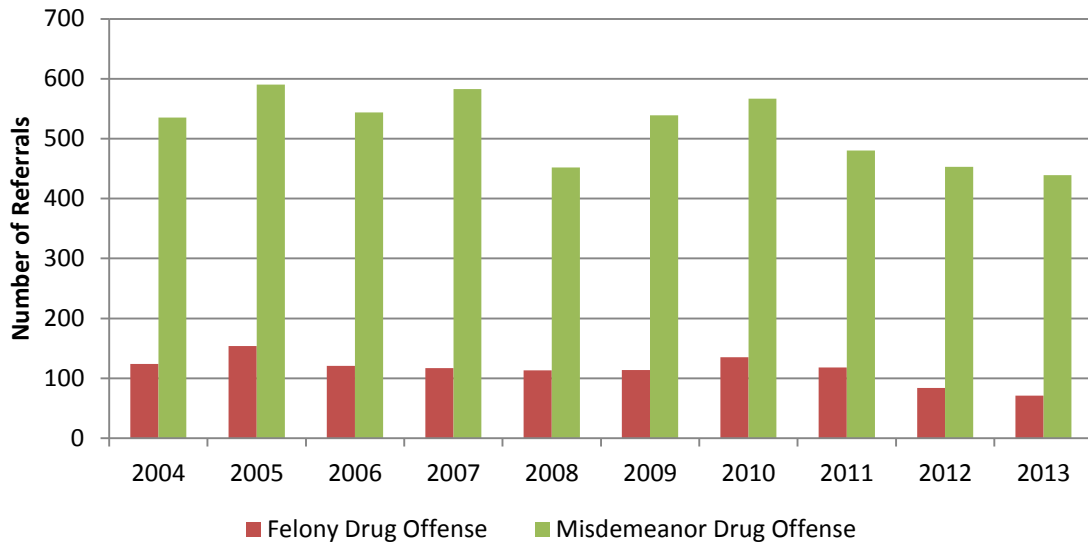


Demographic		Frequency	Percent
<b>Gender</b>			
Male		<b>2995</b>	<b>76.1%</b>
Female		<b>943</b>	<b>23.9%</b>
<b>Race</b>			
Caucasian		<b>1044</b>	<b>26.5%</b>
African American		<b>1616</b>	<b>41.0%</b>
Hispanic		<b>1229</b>	<b>31.2%</b>
Other		<b>49</b>	<b>1.2%</b>

### Referrals by Age

Age	Frequency	Percentage
10	<b>14</b>	<b>0.4%</b>
11	<b>55</b>	<b>1.4%</b>
12	<b>219</b>	<b>5.6%</b>
13	<b>433</b>	<b>11.0%</b>
14	<b>731</b>	<b>18.6%</b>
15	<b>976</b>	<b>24.8%</b>
16	<b>1313</b>	<b>33.3%</b>
17+	<b>197</b>	<b>5.0%</b>

## Drug Offenses: 2004-2013



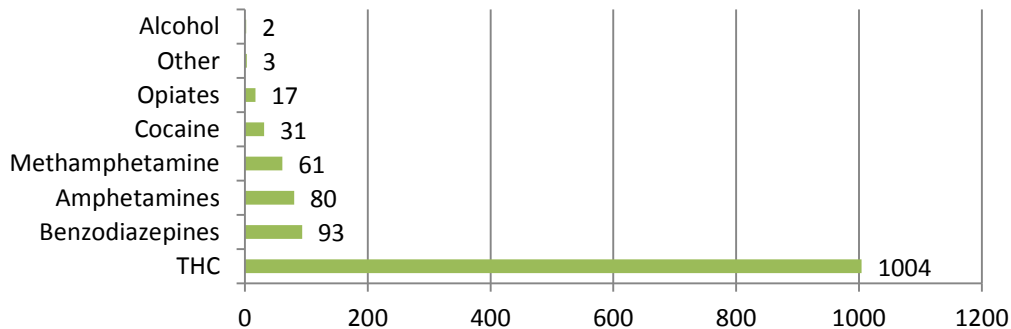
Offense Level	2004	2005	2006	2007	2008	2009	2010	2011	2012	2013
<b>Felony</b>	124	154	121	117	113	114	135	118	84	71
<b>Misdemeanor</b>	535	590	544	583	452	539	567	480	453	439
<b>TOTAL</b>	659	744	665	700	565	653	702	598	537	510

## Drug Testing

In 2013, 4185 Probation/Detention drug tests were performed:

- Less than 1% were inconclusive (n=19)
- 73.2% were negative (n=3015)
- 26.8% were positive (n=1104)
  - 84.9% tested positive for one drug (n= 938)
  - 15.1% tested positive for more than one drug (n=167)

**Frequency of Drugs Detected on Positive Drug Tests**



## Supervision Average Daily Population

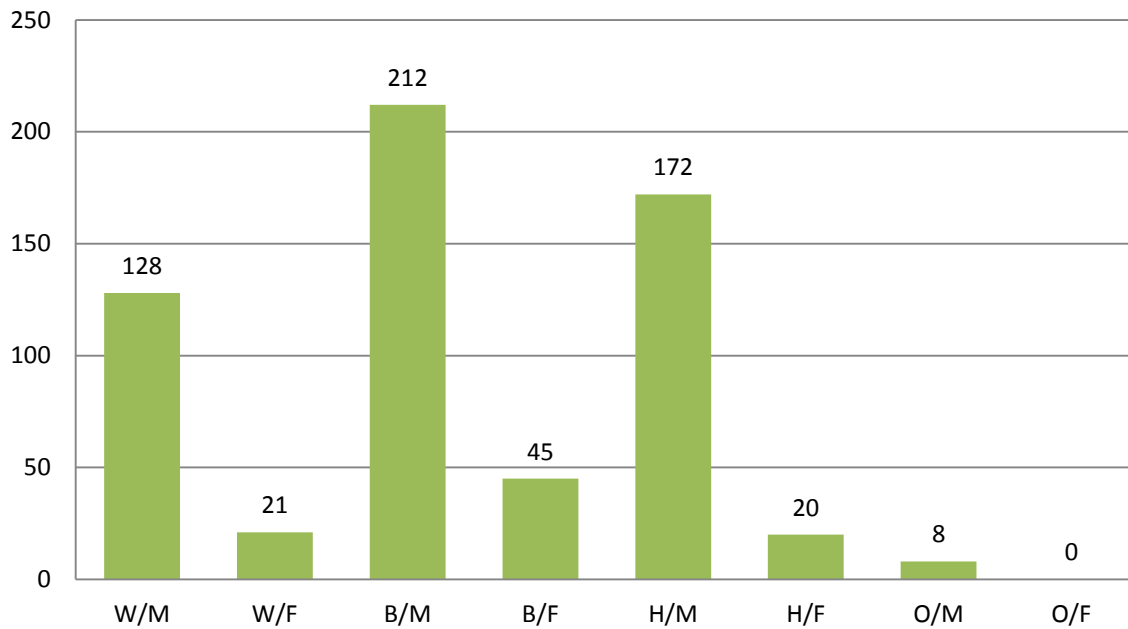
Supervision Type	ADP
All Supervisions	1007
Court-Ordered Probation	717
Deferred Prosecution Probation	228
Judgment Withheld	62

## Average Caseload by Unit

Unit	Average Caseload
Traditional Probation	20.6
Placement	11.8
Family Partnership Program (FPP)-SNDP	13.8
FPP-Specialized	8.4
Sex Offending	14.6
Drug Court	16.9

## Demographics of Youth Placed on Court-Ordered Probation

**Juveniles Placed on Court-Ordered Probation by Gender & Ethnicity**



### Juveniles Placed on Court-Ordered Probation by Gender & Ethnicity

Demographic	Frequency	Percent
Gender		
Male	520	85.8%
Female	86	14.2%
Ethnicity		
Caucasian	149	24.6%
African American	257	42.4%
Hispanic	192	31.7%
Other	8	1.3%

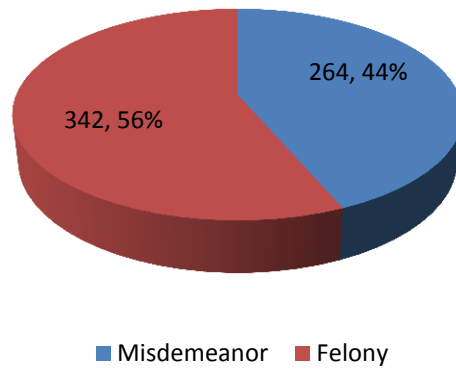
### Age of Juveniles Placed on Court-Ordered Probation

Age	Frequency	Percentage
10	0	0.0%
11	4	0.7%
12	30	5.0%
13	52	8.6%
14	105	17.3%
15	157	25.9%
16	193	31.8%
17+	65	10.7%
Average Age at Disposition = 15 years		

### Offense Category of Juveniles Placed on Court-Ordered Probation

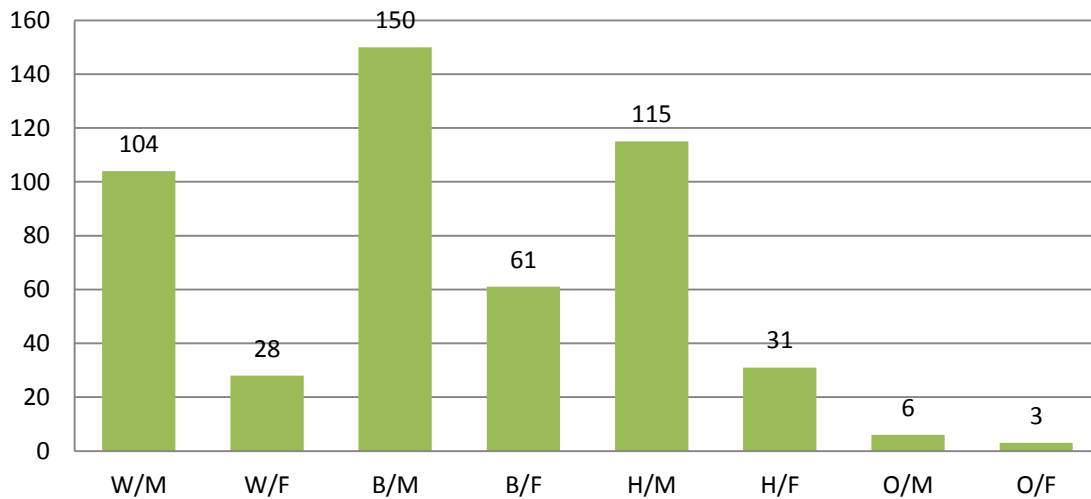
Offense Level	Offense Type	Count	Percentage
FELONY	Violent Against Person	153	25.3%
	Against Person	3	0.5%
	Property	150	24.8%
	Drug	16	2.6%
	Weapon	6	1.0%
	Public Order/Administration	14	2.3%
MISDEMEANOR	Against Person	92	15.2%
	Property	87	14.4%
	Drug	47	7.8%
	Weapon	5	0.8%
	Public Order/Administration	33	5.4%

### Juveniles Placed on Court-Ordered Probation by Offense Level



### Demographics of Youth Placed on Deferred Prosecution Probation

#### Juveniles Placed on Deferred Prosecution Probation by Gender & Ethnicity



Demographic	Frequency	Percent
<b>Gender</b>		
Male	<b>375</b>	<b>75.3%</b>
Female	<b>123</b>	<b>24.7%</b>
<b>Ethnicity</b>		
Caucasian	<b>132</b>	<b>26.5%</b>
African American	<b>211</b>	<b>42.4%</b>
Hispanic	<b>146</b>	<b>29.3%</b>
Other	<b>9</b>	<b>1.8%</b>

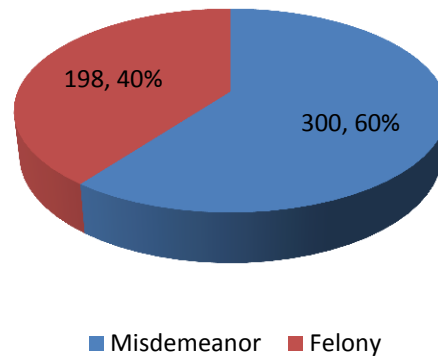
### Age of Juveniles Placed on Deferred Prosecution Probation

Age	Frequency	Percentage
10	3	0.6%
11	16	3.2%
12	28	5.6%
13	62	12.4%
14	102	20.5%
15	116	23.3%
16	145	29.1%
17+	26	5.2%
<b>Average Age at Disposition = 14.5 years</b>		

### Offense Category of Juveniles Placed on Deferred Prosecution Probation

Offense Level	Offense Type	Count	Percentage
<b>FELONY</b>	Violent Against Person	72	14.5%
	Against Person	0	0.0%
	Property	90	18.1%
	Drug	14	2.8%
	Weapon	14	2.8%
	Public Order/Administration	8	1.6%
<b>MISDEMEANOR</b>	Against Person	115	23.1%
	Property	119	23.9%
	Drug	42	8.4%
	Weapon	1	0.2%
	Public Order/Administration	23	4.6%

### Juveniles Placed on Deferred Prosecution Probation by Offense Level



## Specialized Caseloads

### Number Served & Completion Status

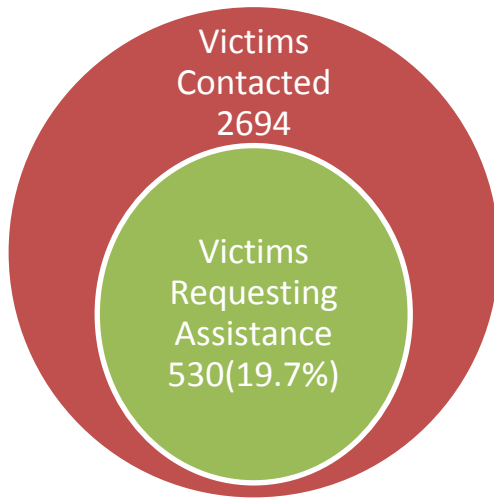
Specialized Unit	Number Served	Number of Completions	Other Completions	Successful Completions	Unsuccessful Completions
Placement	123	80	1	55 (69.6%)	24 (30.4%)
Family Partnership Program (FPP)-SNDP	128	85	10	61 (81.3%)	14 (18.7%)
Family Partnership Program (FPP)-Specialized	78	52	4	32 (66.7%)	16 (33.3%)
Sex Offending	155	77	9	62 (91.2%)	6 (8.8%)
Drug Court	181	138	0	117 (84.8%)	21 (15.2%)

### Community Service & Restitution Project

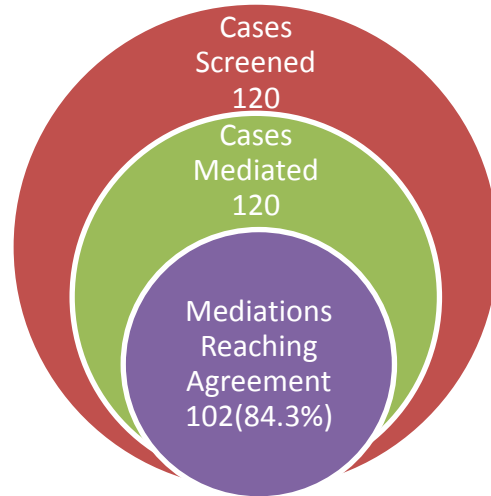
<b>Total Number of Hours</b>	<b>8755.5</b>
<b>Number Served</b>	<b>461</b>
<b>Successful Completions</b>	<b>267</b>
DPP	107
Court-Ordered	67
Drug Court	93
<b>Unsuccessful Completions</b>	<b>70</b>
DPP	28
Court-Ordered	34
Drug Court	8
<b>Other Completions</b>	<b>16</b>
<b>Average Caseload</b>	<b>39</b>

## Victim's Assistance Unit

### Victim Assistance Packets



### Victim Offender Mediation Program



### Restitution Project

Restitution/Fee Type	Total Active Cases during 2013	New Cases Added during 2013	Amount Paid
<b>Voluntary Restitution</b>	428	166	\$95,333.39
<b>Court-Ordered Restitution</b>	456	128	\$20,381.18
<b>Court-Ordered Attorney Fees</b>	181	34	\$2,141.92
<b>Court-Ordered Probation Fees</b>	767	169	\$11,508.35
<b>Court-Ordered Court Fees</b>	491	143	\$1,004.00
<b>Court-Ordered Child Support</b>	5	1	\$6,415.00
<b>Deferred Prosecution Probation Fees</b>	836	205	\$8,699.13
<b>TOTAL</b>	3164	846	\$145,482.97



## Community Programs

Program	Number Served	Number of Completions	Other Completions*	Successful Completions	Unsuccessful Completions
<b>Family Preservation (Functional Family Therapy)</b>	187	146	13	81 (60.9%)	52 (39.1%)
<b>Family Preservation (Families in Transition)</b>	72	56	2	44 (81.5%)	10 (18.5%)
<b>TCAP (Court Transition)</b>	64	59	0	51 (86.4%)	8 (13.6%)
<b>TCAP (Intensive)</b>	217	162	15	96 (65.3%)	51 (34.7%)
<b>Cassata</b>	28	20	0	12 (60.0%)	8 (40.0%)
<b>Neighborhood Conferencing Committee (NCC)</b>	29	24	0	24 (100.0%)	0 (0.0%)
<b>CATIE-REACH</b>	61	42	4	22 (57.9%)	16 (42.1%)
<b>UHC**</b>	14	14	0	14 (100.0%)	0 (0.0%)
<b>CUF**</b>	10	11	1	9 (90.0%)	1 (10.0%)
<b>DAEP-Insights</b>	68	57	13	40 (90.9%)	4 (9.1%)

\*Youth who are discharged from programs for "other" reasons are not included in the number of completions or calculating percent of successful completions and percent of unsuccessful completions.

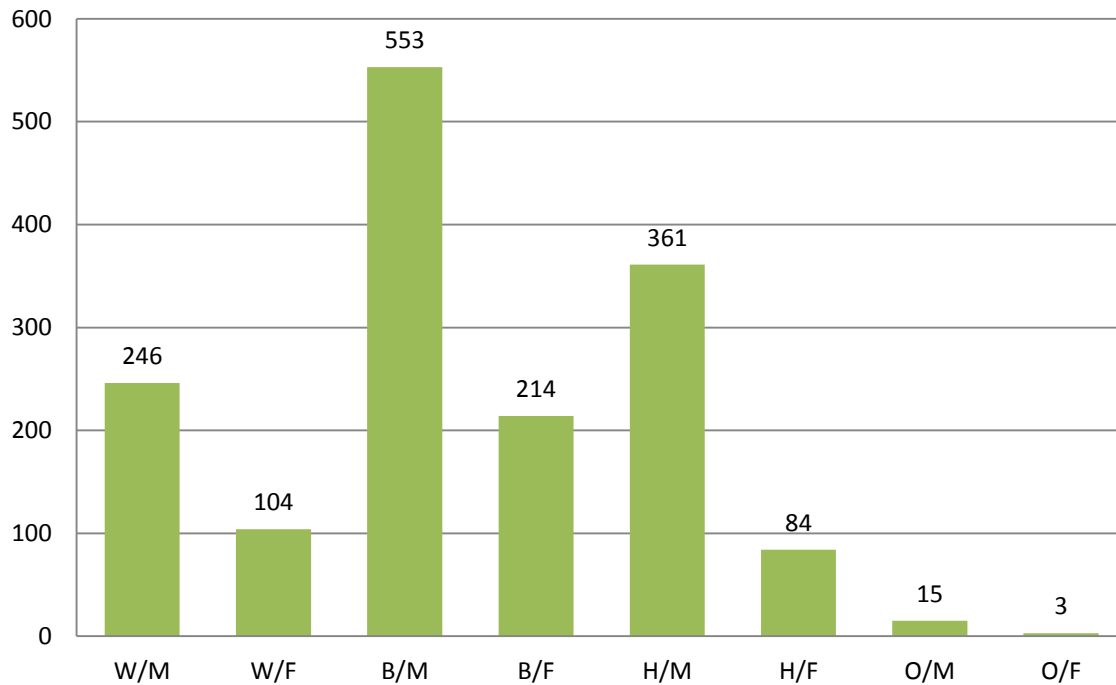
\*\*Diversion Programs UHC & CUF ended on 8/31/2013.

## Lynn W. Ross Juvenile Detention Center

<b>Number of Admissions</b>	<b>1580</b>
<b>Number of Individual Youth Admitted</b>	<b>1104</b>
<b>Child Care Days</b>	<b>17650</b>
<b>Average Daily Population</b>	<b>48.37</b>
<b>Average Length of Stay</b>	<b>11.05</b>

## Demographics of Admitted Youth

Detention Admissions by Gender & Ethnicity



### Detention Admissions by Gender & Ethnicity

Demographic	Frequency	Percent
Gender		
Male	<b>1175</b>	<b>74.4%</b>
Female	<b>405</b>	<b>25.6%</b>
Ethnicity		
Caucasian	<b>350</b>	<b>22.2%</b>
African American	<b>767</b>	<b>48.5%</b>
Hispanic	<b>445</b>	<b>28.2%</b>
Other	<b>18</b>	<b>1.1%</b>

### Detention Admissions by Age

Age	Frequency	Percentage
10	<b>6</b>	<b>0.4%</b>
11	<b>19</b>	<b>1.2%</b>
12	<b>76</b>	<b>4.8%</b>
13	<b>144</b>	<b>9.1%</b>
14	<b>295</b>	<b>18.7%</b>
15	<b>417</b>	<b>26.4%</b>
16	<b>524</b>	<b>33.2%</b>
17+	<b>99</b>	<b>6.3%</b>
<b>Average Age at Admission = 15 years</b>		

### Detention Admissions by Reason Detained

Reason	Frequency	Percentage
Dangerous to Self/Others	<b>454</b>	<b>28.7%</b>
Previously found Delinquent	<b>522</b>	<b>33.0%</b>
Inadequate Supervision	<b>276</b>	<b>17.5%</b>
No Parent Guardian	<b>208</b>	<b>13.2%</b>
Court Order	<b>47</b>	<b>3.0%</b>
Likely to Abscond	<b>37</b>	<b>2.3%</b>
Alleged Delinquent Conduct	<b>28</b>	<b>1.8%</b>
Pending Transport to Placement	<b>3</b>	<b>0.2%</b>
Pending Transport to TJJD	<b>5</b>	<b>0.3%</b>

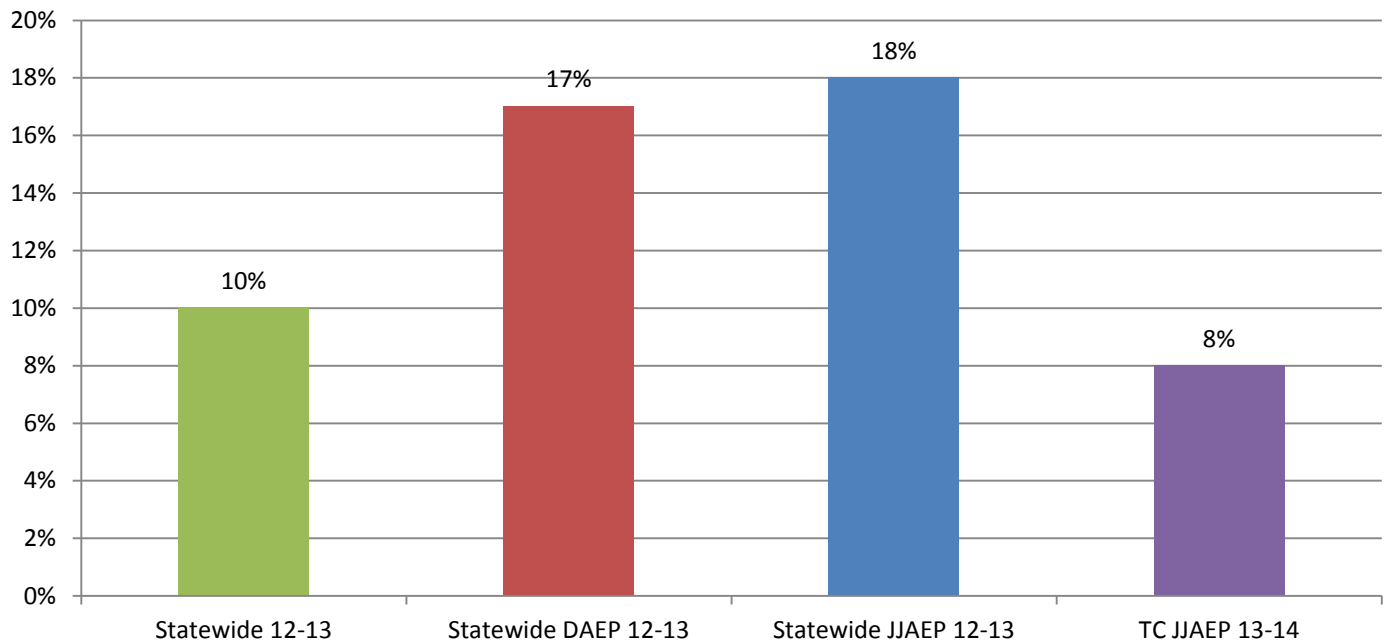
## Juvenile Justice Alternative Education Program

	2010/11						2011/12						2012/13						2013/2014									
<b>New Referrals (Total Served)</b>	N=200 (322)						N=173 (254)						N=134 (200)						N=91 (153)									
<b>Expulsion Offense</b>																												
Juvenile Court Ordered	1 (<1%)												4 (3%)															
Mandatory	121 (61%)						100 (58%)						80 (60%)						64 (70.3%)									
Discretionary	78 (39%)						73 (42%)						50 (37%)						27 (29.7%)									
<b>School District</b>	<b>M</b>	<b>MS</b>	<b>D</b>	<b>DS</b>	<b>T</b>	<b>%</b>	<b>M</b>	<b>MS</b>	<b>D</b>	<b>DS</b>	<b>T</b>	<b>%</b>	<b>M</b>	<b>MS</b>	<b>D</b>	<b>DS</b>	<b>CO</b>	<b>COS</b>	<b>T</b>	<b>%</b>	<b>M</b>	<b>MS</b>	<b>D</b>	<b>DS</b>	<b>CO</b>	<b>COS</b>	<b>T</b>	<b>%</b>
Arlington	7	0	29	7	43	22%	5	1	16	2	24	14%	7	0	4	0	0	1	12	9%	3	1	6	0	0	0	10	11%
Azle	0	0	0	0	0	0%	0	0	2	0	2	1%	1	0	1	0	0	0	2	2%	2	0	0	0	0	0	2	2%
Birdville	2	0	8	0	10	5%	2	1	5	1	9	5%	1	1	5	3	0	0	10	8%	1	0	5	0	0	0	6	7%
Burleson	2	0	1	0	3	2%	1	0	0	3	4	2%	0	0	0	0	0	0	0	0%	1	0	0	0	0	0	1	1%
Carroll	0	0	0	0	0	0%	0	0	0	0	0	0%	0	0	0	0	0	0	0	0%	0	0	0	0	0	0	0	0%
Castleberry	1	1	0	0	2	1%	0	0	0	0	0	0%	0	0	2	0	0	0	2	2%	0	0	0	0	0	0	0	0%
Crowley	5	1	1	0	7	4%	1	0	0	0	1	1%	5	0	1	0	0	0	6	5%	5	0	3	0	0	0	8	9%
Eagle Mountain-Saginaw	5	1	2	1	9	5%	22	0	1	1	24	14%	8	3	0	0	0	0	11	8%	11	0	0	1	0	0	12	13%
Everman	0	0	0	0	0	0%	0	1	0	0	1	1%	1	0	0	0	0	0	1	<1%	0	0	0	0	0	0	0	0%
Fort Worth	54	9	17	0	80	40%	38	5	25	4	72	42%	34	4	22	6	2	0	68	51%	22	4	8	0	0	0	34	37%
Grapevine-Colleyville	8	0	1	0	9	5%	4	2	0	2	8	5%	2	1	0	0	0	0	3	2%	0	0	0	0	0	0	0	0%
Hurst Euless Bedford	8	2	2	0	12	6%	4	0	1	0	5	3%	3	2	0	0	1	0	6	5%	2	0	3	0	0	0	5	6%
Keller	3	0	0	0	3	2%	1	1	1	0	3	2%	3	0	0	0	0	0	3	2%	3	0	0	0	0	0	3	3%
Kennedale	0	0	0	0	0	0%	0	0	0	0	0	0%	0	0	0	0	0	0	0	0%	1	1	0	0	0	0	2	2%
Lake Worth	1	0	4	0	5	3%	4	0	3	0	7	4%	0	0	0	0	0	0	0	0%	0	0	0	0	0	0	0	0%
Mansfield	6	2	1	2	11	6%	1	1	6	0	8	5%	2	0	3	3	0	0	8	6%	6	0	1	0	0	0	7	8%
Northwest	0	0	0	0	0	0%	0	0	0	0	0	0%	0	0	0	0	0	0	0	0%	0	0	0	0	0	0	0	0%
White Settlement	3	0	0	2	5	3%	4	1	0	0	5	3%	2	0	0	0	0	0	2	2%	1	0	0	0	0	0	1	1%
<b>Classified Special Education</b>	<b>M</b>		<b>D</b>		<b>T (%)</b>		<b>M</b>		<b>D</b>		<b>T (%)</b>		<b>M</b>		<b>D</b>		<b>C</b>		<b>T (%)</b>		<b>M</b>		<b>D</b>		<b>C</b>		<b>T (%)</b>	
LD	9		5		14 (50%)		3		3		6 (23%)		5		6		1		12 (50%)		3		0		0		43%	
ED	4		2		6 (21%)		4		6		10 (38%)		4		3		0		7 (29%)		1		1		0		29%	
OHI	2		4		6 (21%)		4		3		7 (27%)		2		2		0		4 (17%)		0		0		0		0%	
LD/ED	0		0		0 (0%)		1		0		1 (4%)		0		0		0		0 (0%)		0		0		0		0%	
ED/OHI	1		0		1 (4%)		0		0		0 (0%)		0		1		0		1 (4%)		0		0		0		0%	
LD/OHI	0		0		0 (0%)		0		0		0 (0%)		0		0		0		0 (0%)		0		0		0		0%	
MR	0		1		1 (4%)		1		1		2 (8%)		0		0		0		0 (0%)		2		0		0		29%	
<b>TOTAL</b>	16 (13%)		12 (15%)		28 (14%)		13 (13%)		13 (18%)		26 (15%)		11 (14%)		12 (24%)		1 (25%)		24 (18%)		6 (9%)		1 (4%)		0 (0%)		7 (8%)	

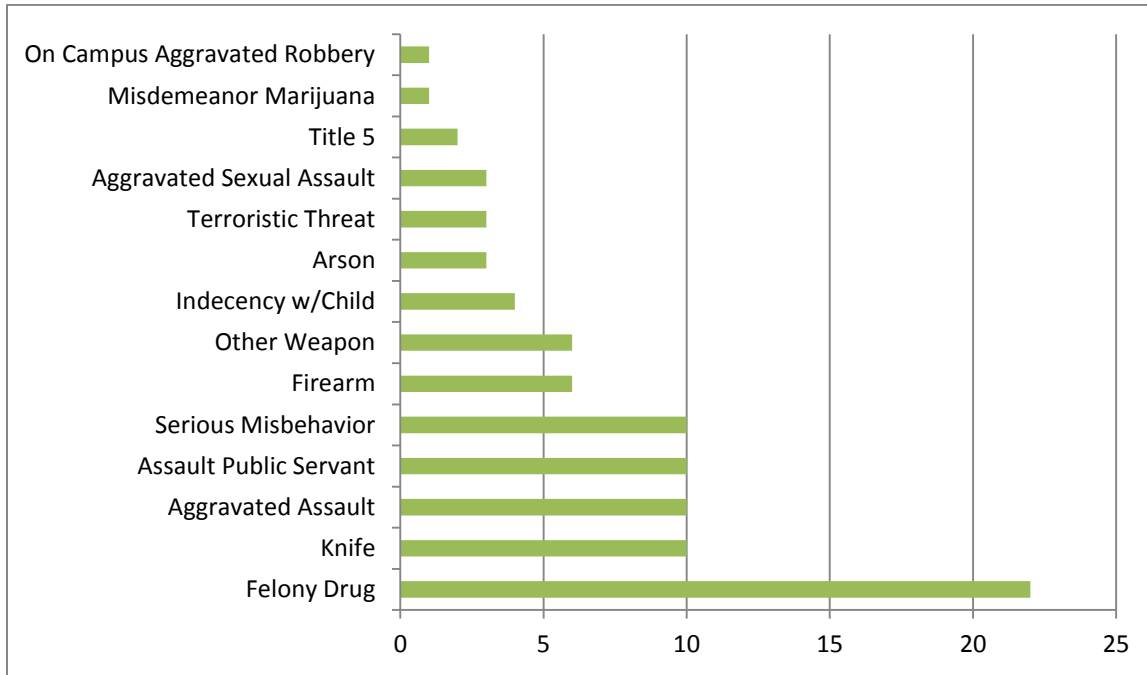
\*M=Mandatory, MSE=Mandatory Special Education, D= Discretionary, DSE= Discretionary Special Education, CO= Court Ordered, COS= Court Ordered Special Education

	2009/10	2010/11	2011/12	2012/13	2013/2014
New Referrals	<b>N= 280</b>	<b>N=200</b>	<b>N=173</b>	<b>N=134</b>	<b>N=91</b>
<b>Gender</b>					
Male	223 (80%)	165 (83%)	152 (88%)	<b>113 (84%)</b>	<b>82 (90%)</b>
Female	57 (20%)	35 (18%)	21 (12%)	<b>21 (16%)</b>	<b>9 (10%)</b>
<b>Ethnicity</b>					
African American	86 (31%)	69 (35%)	59 (34%)	<b>46 (34%)</b>	<b>29 (32%)</b>
American Indian	0 (0%)	0 (0%)	0 (0%)	<b>3 (2%)</b>	<b>0 (0%)</b>
Asian	3 (1%)	5 (3%)	3 (2%)	<b>1 (1%)</b>	<b>0 (0%)</b>
Caucasian	84 (30%)	46 (23%)	42 (24%)	<b>31 (23%)</b>	<b>26 (29%)</b>
Hispanic	106 (38%)	80 (40%)	69 (40%)	<b>53 (40%)</b>	<b>34 (37%)</b>
Other	1 (<1%)	0 (0%)	0 (0%)	<b>0 (0%)</b>	<b>2 (2%)</b>
<b>Grade Level</b>					
4 <sup>th</sup>	0 (0%)	0 (0%)	0 (0%)	<b>1 (1%)</b>	<b>0 (0%)</b>
5 <sup>th</sup>	4 (1%)	2 (1%)	3 (2%)	<b>3 (2%)</b>	<b>1 (1%)</b>
6 <sup>th</sup>	15 (5%)	11 (6%)	9 (5%)	<b>10 (7%)</b>	<b>2 (2%)</b>
7 <sup>th</sup>	36 (13%)	25 (13%)	16 (9%)	<b>24 (18%)</b>	<b>10 (11%)</b>
8 <sup>th</sup>	51 (18%)	41 (21%)	47 (27%)	<b>24 (18%)</b>	<b>14 (15%)</b>
9 <sup>th</sup>	82 (29%)	54 (27%)	46 (27%)	<b>39 (29%)</b>	<b>24 (26%)</b>
10 <sup>th</sup>	48 (17%)	30 (15%)	32 (18%)	<b>15 (11%)</b>	<b>20 (22%)</b>
11 <sup>th</sup>	26 (9%)	11 (6%)	16 (9%)	<b>7 (5%)</b>	<b>9 (10%)</b>
12 <sup>th</sup>	18 (6%)	26 (13%)	4 (2%)	<b>11 (8%)</b>	<b>11 (12%)</b>

### Tarrant County JJAEP Special Education Enrollment/Referrals



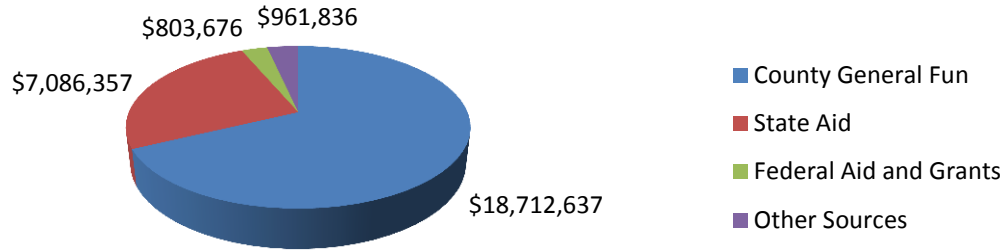
### Tarrant County JJAEP Cause for Expulsion: 2013/2014



### Tarrant County JJAEP Discharge Reason: 2013/2014

Discharge Reasons	Never Enrolled	Enrolled
Completed Expulsion Term	0	75
Graduated	0	0
Obtained GED	0	6
Enrolled or Court Ordered GED Program	0	2
ISD Rescinded Expulsion	1	3
Deceased	0	1
ARD-ISD Rescinded Expulsion	0	0
Certified as an Adult	0	0
TYC	0	0
Jail (30 consecutive school days)	3	1
Placement/JPD	0	2
Placement/Parent	0	0
CPS Custody/Placement	0	0
Detention (30 consecutive school days)	0	2
Treatment (TYRC, Millwood, Excel)	1	12
Moved to Another District (out of Tarrant County)	0	5
Home School	4	0
Private School	1	0
Drop out/18-19 years of age	0	0
Unable to Locate	0	0
Truancy (40 consecutive unexcused absences)	0	1
Runaway/DTA (30 consecutive school days)	0	1
Adult Court Order-no contact with Minors	0	0
<b>Total</b>	<b>10</b>	<b>111</b>

## Tarrant County Juvenile Services Source of Funds: Fiscal Year 2013



<b>COUNTY GENERAL FUND:</b>		<b>\$18,712,637</b>
General Fund - Administration & Probation	\$12,674,287	
▪ Includes support funding for JJAEP and Grant Match		
General Fund - Detention	6,004,174	
Children's Home Trust	3,723	
Probation Fees	20,829	
Miscellaneous Donations	8,989	
Interest Account	635	
<b>STATE AID – TEXAS JUVENILE PROBATION COMMISSION</b>		<b>\$7,086,357</b>
State Aid	\$ 5,759,535	
Special Needs Diversionary Program	216,800	
Commitment Reduction Program	1,009,230	
Prevention/Intervention	100,792	
<b>FEDERAL AID AND GRANTS:</b>		<b>\$803,676</b>
Title IV-E Reimbursements (Through TDPLRS)	\$402,445	
National School Lunch Program	115,112	
Juvenile Accountability Block Grant – Drug Court	133,799	
CJD Governor's Office – Life Skills	78,400	
CJD Governor's Office – 1 <sup>st</sup> Offender	73,920	
<b>OTHER SOURCES:</b>		<b>\$961,836</b>
JJAEP Mandatory Reimbursement - TJPC	\$464,836	
JJAEP Discretionary Reimbursement - ISD's	497,000	
<b>GRAND TOTAL – FY 2012 SOURCES OF FUNDS</b>		<b>\$27,564,506</b>