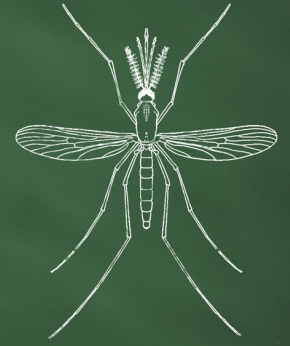




Tarrant County Public Health

Weekly Arbovirus Surveillance Report



MMWR Week May 31 - June 6, 2026

Week 22 Summary

138 mosquito pools* have been tested in NTRL from week 22

- Year-to-date NTRL has tested a total of 749 mosquito pools

5 mosquito pools tested positive for WNV this week:
Bedford (1) Burleson* (1) Colleyville (2) Unincorporated (1)

Average number of mosquitoes/trap include:

- Culex spp: 96.8
- Aedes aegypti and Aedes albopictus: 5.3

NTRL - North Texas Regional Lab WNV - West Nile virus; SLEV - St. Louis encephalitis virus * May include data from outside Tarrant County

Commulative Positive WNV Pools per Municipality

There have been a total of 15 positives in 2026

Bedford (1) Burleson *(2) Colleyville (3) Fort Worth (3) Grand Prairie* (4) Haslet (1)
Unincorporated (1)

* May include data from outside Tarrant County

Table 1. MLE⁽¹⁾ and VI⁽²⁾ for County Quadrants, Weeks 21 and 22

	County Quadrant	# Gravid Traps	Ave F Culex spp	Positive Pools	MLE (Lower-Upper Limit)	VI
Week 21	Northeast	45	50.4	1	0.68 (0.04-3.32)	0.03
	Northwest	22	67.3	1	1.26 (0.07-6.17)	0.08
	Southeast	36	32.0	2	2.40 (0.44-7.77)	0.07
	Southwest	15	35.1	0	0.00 (0.00-7.65)	0.00
Week 22	Northeast	54	75.3	3	1.73 (0.46-4.69)	0.13
	Northwest	31	198.0	1	0.79 (0.05-3.87)	0.15
	Southeast	36	57.7	0	0.00 (0.00-3.42)	0.00
	Southwest	19	105.5	1	1.60 (0.09-7.84)	0.17

Data source: Tarrant County Public Health

1. MLE= Maximum Likelihood or the estimate of the mosquito infection rate per mosquito species.

2. VI= Vector Index which is a measure of infectivity accounting for vector species composition, vector species population density, and proportion of vector population infected with WNV
Averages, MLE, and limits will be given for species with identified infection rates only and only for the latest two week. MLE, Lower and Upper Limits are based on a 95% confidence interval. All data in this table is based on collection date. Calculated using a Maximum Likelihood Estimation (MLE). Biggerstaff, Brad J. PooledInfRate, Version 4.0: a Microsoft® Office Excel® Add-In to compute prevalence estimates from pooled samples. Centers for Disease Control and Prevention, Fort Collins, CO, U.S.A., 2009

Cumulative Data for the Tarrant County Region, Weeks 19-22

Week	May 10- May 16	May 17- May 23	May 24- May 30	May 31- Jun 6	YTD
MMWR Week	19	20	21	22	
Total Number of gravid traps set in Tarrant Region	159	153	141	166	958
Average number of Culex spp per gravid trap	112.3	80.8	42.6	96.8	73.6
Number of mosquito pools tested ¹ (NTRL; non-NTRL)	136;23	136;17	118;17	138;20	749;180
Number of positive mosquito pools (NTRL; non-NTRL) ¹	1;2	2;0	3;2	5;0	11;4
WNV infection rate per 1,000 Culex spp ²	0.42	0.47	1.15	1.08	
Weekly vector index ³	0.043	0.036	0.046	0.102	
Total BG Sentinel traps set in Tarrant Region	26	24	23	26	129
Average number of female Aedes aegypti and Aedes albopictus per BG trap	3.8	2.2	3.9	5.3	3.2

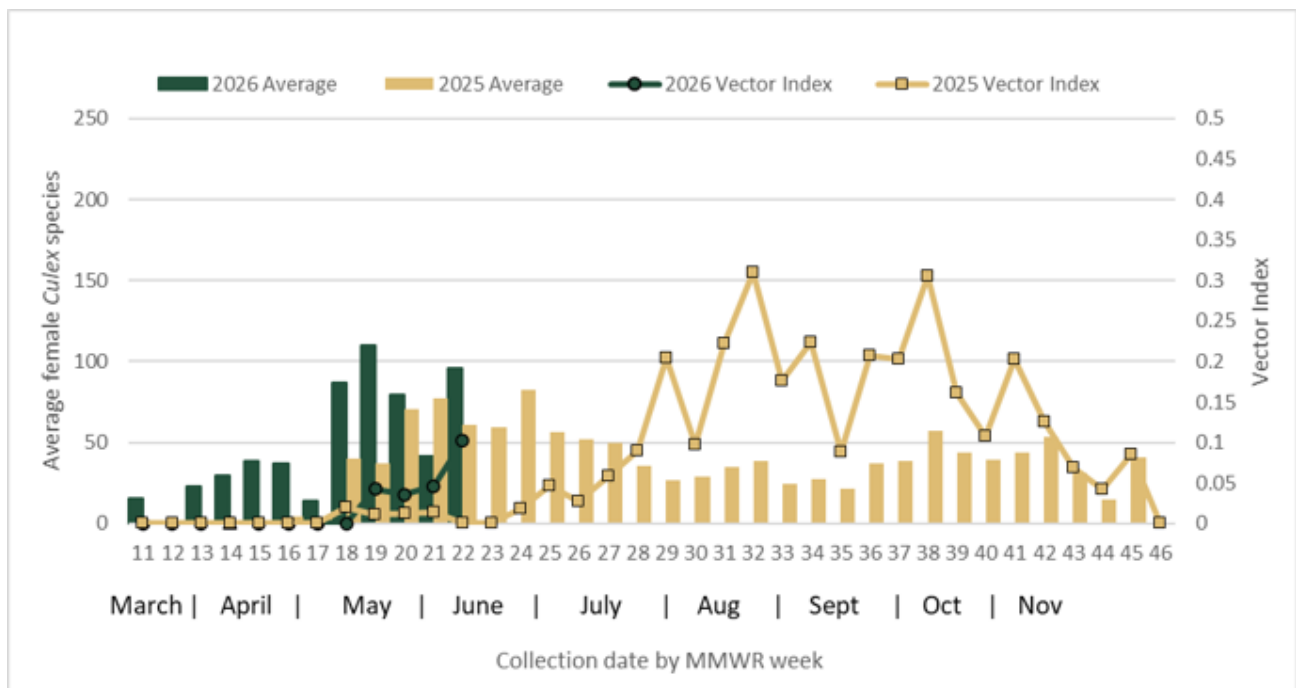
¹ Based on mosquito collection date; NTRL = North Texas Regional Laboratory

² Calculated using a Maximum Likelihood Estimation (MLE). Biggerstaff, Brad J. PooledInfRate, Version 4.0: a Microsoft® Office Excel® Add-In to compute prevalence estimates from pooled samples. Centers for Disease Control and Prevention, Fort Collins, CO, U.S.A., 2009 Culex spp. includes pools of both Cx restuans and Cx quinquefasciatus. These MLEs are calculated separately, per species and added together as per instructions by CDC.

³ Vector Index is a measure of infectivity accounting for vector species composition, vector species population density, and proportion of vector population infected with WNV

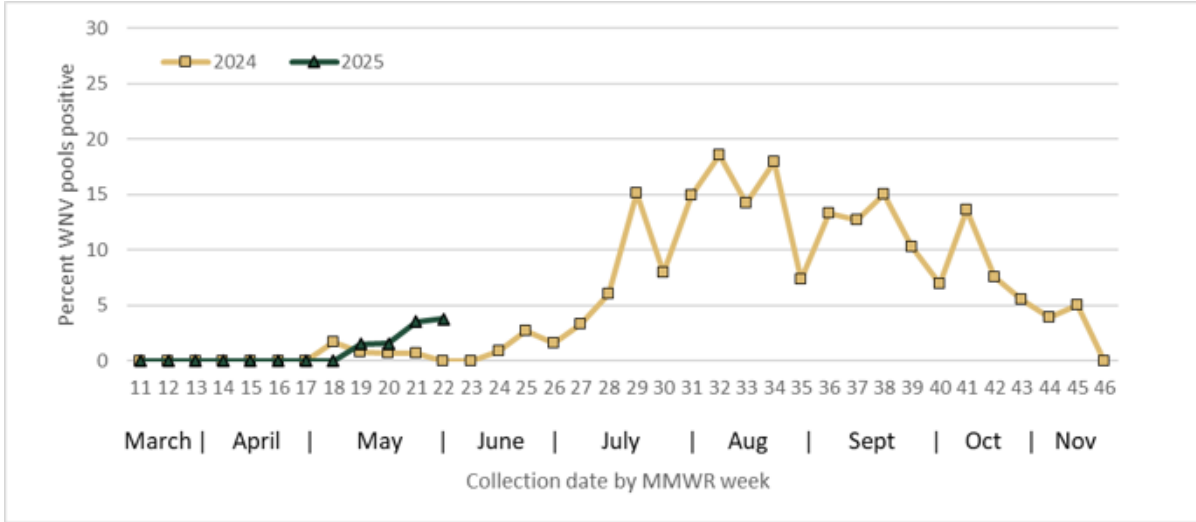
Note: Infection rate and vector index calculations now includes pools from outside laboratories; Data subject to change due to on-going case investigations, mosquito collection, and testing. Data source: Tarrant County Public Health

Figure 1. Average Number of Female Culex Species Per Trap and Vector Index by Collection Date, Tarrant County, 2025-2026



Data Source: Tarrant County Public Health

Figure 2. Percentage of Mosquito Pools Positive for WNV by Collection Date, Tarrant County, 2025-2026



Data Source: Tarrant County Public Health

Table 3. North Texas Arbovirus Activity as Reported by Texas DSHS on June 9, 2026

North Texas Counties	WNV					CHIKV		DENV		SLEV		Zika	
	Positive Mosquito Pools	Human Cases			Positive Mosquito Pools	Human Cases	Positive Mosquito Pools	Human Cases	Positive Mosquito Pools	Human Cases	Positive Mosquito Pools	Human Cases	
Collin	3	0	WNF	0	WNND	0	1	0	0	0	0	0	0
Dallas	26	0	WNF	0	WNND	0	0	0	0	0	0	0	0
Denton	5	0	WNF	0	WNND	0	0	0	0	0	0	0	0
Johnson	1	0	WNF	0	WNND	0	0	0	0	0	0	0	0
Tarrant	16	0	WNF	0	WNND	0	0	0	0	0	0	0	0
North Texas	51	0	WNF	0	WNND	0	1	0	1	0	0	0	0
All Texas Counties	124	0		0		0	1	0	3	0	0	0	0

*All reported CHIKV, DENV, & Zika human cases are travel-related

WNV– West Nile virus; WNF– West Nile fever; WNND– West Nile neuroinvasive disease; CHIKV– Chikungunya virus; DENV– Dengue virus; SLEV– St. Louis encephalitis virus

For Additional Information Please Visit the Links Below:

- Tarrant County Public Health
- Vector Control
 - Be Mosquito Free
 - WNV Interactive Mapping Tool
 - Eliminating Mosquito Breeding Sites
 - Mosquitoes Love Water

- Environmental Protection Agency
- Insect Repellent Information

- Texas Department of State Health Services
- DSHS Mosquito-Borne Diseases
 - DSHS West Nile Virus
 - DSHS Dengue
 - Arbovirus Activity Reports

- Center for Disease Control and Prevention
- CDC West Nile Virus
 - CDC Dengue