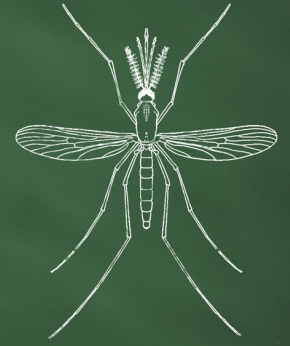




# Tarrant County Public Health

## Weekly Arbovirus Surveillance Report



### MMWR Week June 7-13, 2026

#### Week 23 Summary

131 mosquito pools\* have been tested in NTRL from week 23

- Year-to-date NTRL has tested a total of 880 mosquito pools

6 mosquito pools tested positive for WNV this week:  
Arlington (1) Fort Worth (2) Grand Prairie\* (1) Hurst (1) Keller (1)

Average number of mosquitoes/trap include:

- Culex spp: 60.0
- Aedes aegypti and Aedes albopictus: 9.1

NTRL - North Texas Regional Lab      WNV - West Nile virus; SLEV - St. Louis encephalitis virus      \* May include data from outside Tarrant County

#### Commulative Positive WNV Pools per Municipality

There have been a total of 21 positives in 2026

Arlington (1) Bedford (1) Burleson \*(2) Colleyville (3) Fort Worth (5) Grand Prairie\* (5)  
Haslet (1) Hurst (1) Keller (1) Unincorporated (1)

\* May include data from outside Tarrant County

**Table 1. MLE<sup>(1)</sup> and VI<sup>(2)</sup> for County Quadrants, Weeks 22 and 23**

	County Quadrant	# Gravid Traps	Ave F Culex spp	Positive Pools	MLE (Lower-Upper Limit)	VI
<b>Week 22</b>	Northeast	54	75.3	3	1.73 (0.46-4.69)	0.13
	Northwest	31	198.0	1	0.79 (0.05-3.87)	0.15
	Southeast	36	57.7	0	0.00 (0.00-3.42)	0.00
	Southwest	19	105.5	1	1.60 (0.09-7.84)	0.17
<b>Week 23</b>	Northeast	50	38.1	3	2.51 (0.66-6.84)	0.10
	Northwest	26	121.3	2	1.94 (0.35-6.42)	0.23
	Southeast	35	60.3	0	0.00 (0.00-3.49)	0.00
	Southwest	23	54.3	0	0.00 (0.00-5.59)	0.00

Data source: Tarrant County Public Health

1. MLE= Maximum Likelihood or the estimate of the mosquito infection rate per mosquito species.

2. VI= Vector Index which is a measure of infectivity accounting for vector species composition, vector species population density, and proportion of vector population infected with WNV  
Averages, MLE, and limits will be given for species with identified infection rates only and only for the latest two week. MLE, Lower and Upper Limits are based on a 95% confidence interval. All data in this table is based on collection date. Calculated using a Maximum Likelihood Estimation (MLE). Biggerstaff, Brad J. PooledInfRate, Version 4.0: a Microsoft® Office Excel® Add-In to compute prevalence estimates from pooled samples. Centers for Disease Control and Prevention, Fort Collins, CO, U.S.A., 2009

## Cumulative Data for the Tarrant County Region, Weeks 20-23

Week	May 17- May 23	May 24- May 30	May 31- Jun 6	Jun 7 - Jun 13	YTD
MMWR Week	20	21	22	23	
Total Number of gravid traps set in Tarrant Region	153	141	166	160	1118
Average number of Culex spp per gravid trap	80.8	42.6	96.8	60.0	71.6
Number of mosquito pools tested <sup>1</sup> (NTRL; non-NTRL)	136;17	118;17	138;20	131;20	880;200
Number of positive mosquito pools (NTRL; non-NTRL) <sup>1</sup>	2;0	3;2	5;0	5;1	16;5
WNV infection rate per 1,000 Culex spp <sup>2</sup>	0.47	1.15	1.08	1.31	
Weekly vector index <sup>3</sup>	0.036	0.046	0.102	0.075	
Total BG Sentinel traps set in Tarrant Region	24	23	26	28	159
Average number of female Aedes aegypti and Aedes albopictus per BG trap	2.2	3.9	5.1	9.1	4.2

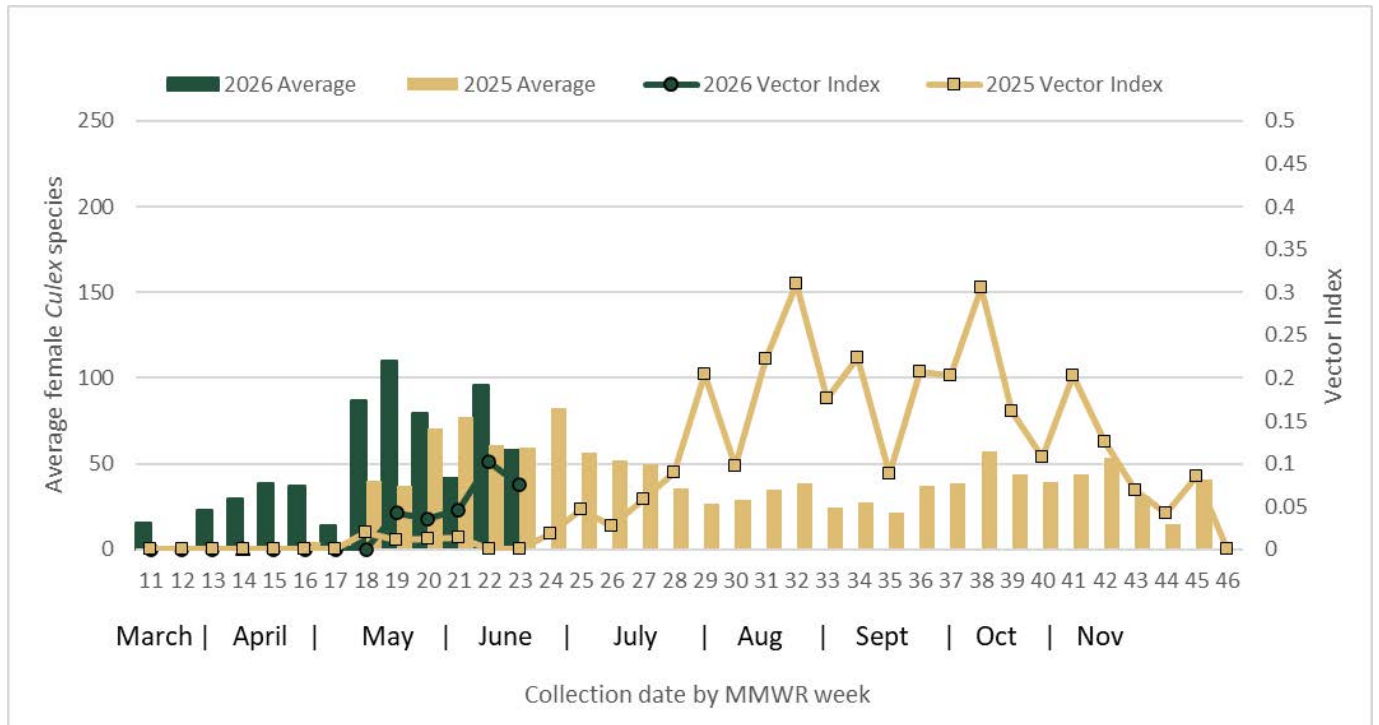
<sup>1</sup> Based on mosquito collection date; NTRL = North Texas Regional Laboratory

<sup>2</sup> Calculated using a Maximum Likelihood Estimation (MLE). Biggerstaff, Brad J. PooledInfRate, Version 4.0: a Microsoft® Office Excel® Add-In to compute prevalence estimates from pooled samples. Centers for Disease Control and Prevention, Fort Collins, CO, U.S.A., 2009 Culex spp. includes pools of both Cx restuans and Cx quinquefasciatus. These MLEs are calculated separately, per species and added together as per instructions by CDC.

<sup>3</sup> Vector Index is a measure of infectivity accounting for vector species composition, vector species population density, and proportion of vector population infected with WNV

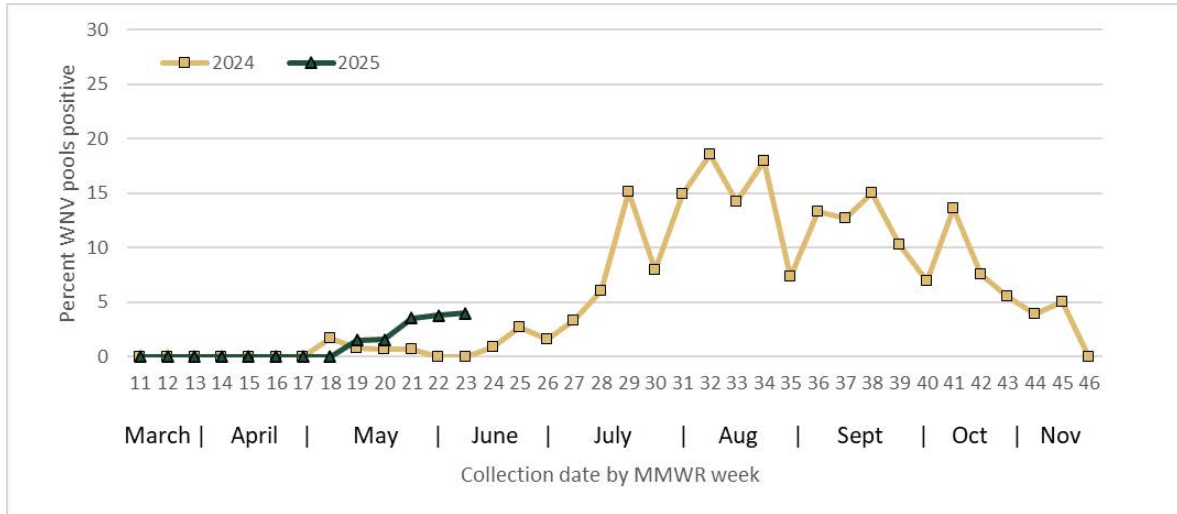
Note: Infection rate and vector index calculations now includes pools from outside laboratories; Data subject to change due to on-going case investigations, mosquito collection, and testing. Data source: Tarrant County Public Health

### Figure 1. Average Number of Female Culex Species Per Trap and Vector Index by Collection Date, Tarrant County, 2025-2026



Data Source: Tarrant County Public Health

**Figure 2. Percentage of Mosquito Pools Positive for WNV by Collection Date, Tarrant County, 2025-2026**



Data Source: Tarrant County Public Health

**Table 3. North Texas Arbovirus Activity as Reported by Texas DSHS on June 16, 2026**

North Texas Counties	WNV					CHIKV		DENV		SLEV		Zika	
	Positive Mosquito Pools	Human Cases			Positive Mosquito Pools	Human Cases	Positive Mosquito Pools	Human Cases	Positive Mosquito Pools	Human Cases	Positive Mosquito Pools	Human Cases	
Collin	3	0	WNF	0	WNND	0	1	0	0	0	0	0	0
Dallas	36	0	WNF	0	WNND	0	0	0	0	0	0	0	0
Denton	7	0	WNF	0	WNND	0	0	0	0	0	0	0	0
Johnson	2	0	WNF	0	WNND	0	0	0	0	0	0	0	0
Tarrant	20	0	WNF	0	WNND	0	0	0	0	0	0	0	0
<b>North Texas</b>	<b>68</b>	<b>0</b>	<b>WNF</b>	<b>0</b>	<b>WNND</b>	<b>0</b>	<b>1</b>	<b>0</b>	<b>1</b>	<b>0</b>	<b>0</b>	<b>0</b>	<b>0</b>
<b>All Texas Counties</b>	<b>124</b>	<b>0</b>		<b>0</b>		<b>0</b>	<b>1</b>	<b>0</b>	<b>4</b>	<b>0</b>	<b>0</b>	<b>0</b>	<b>0</b>

\*All reported CHIKV, DENV, & Zika human cases are travel-related

WNV– West Nile virus; WNF– West Nile fever; WNND– West Nile neuroinvasive disease; CHIKV– Chikungunya virus; DENV– Dengue virus; SLEV– St. Louis encephalitis virus

**For Additional Information Please Visit the Links Below:**

Tarrant County Public Health

- Vector Control
- Be Mosquito Free
- WNV Interactive Mapping Tool
- Eliminating Mosquito Breeding Sites
- Mosquitoes Love Water

Environmental Protection Agency

- Insect Repellent Information

Texas Department of State Health Services

- DSHS Mosquito-Borne Diseases
- DSHS West Nile Virus
- DSHS Dengue
- Arbovirus Activity Reports

Center for Disease Control and Prevention

- CDC West Nile Virus
- CDC Dengue