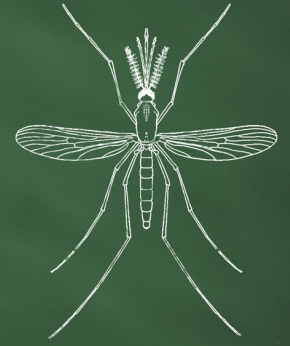




Tarrant County Public Health

Weekly Arbovirus Surveillance Report



MMWR Week June 21-27, 2026

Week 25 Summary

137 mosquito pools* have been tested in NTRL from week 25

- Year-to-date NTRL has tested a total of 1161 mosquito pools

13 mosquito pools tested positive for WNV this week:
 Bedford (1) Colleyville (1) Euless (1) Fort Worth (3) Grapevine (1) Grand Prairie* (2) Keller (1) Pantego (2) Southlake (1)

Average number of mosquitoes/trap include:

- Culex spp: 39.7
- Aedes aegypti and Aedes albopictus: 7.0

NTRL - North Texas Regional Lab

WNV - West Nile virus; SLEV - St. Louis encephalitis virus

* May include data from outside Tarrant County

Commulative Positive WNV Pools per Municipality

There have been a total of 42 positives in 2026

Arlington (2) Bedford (2) Burleson *(3) Colleyville (4) Euless (2) Fort Worth (8) Grand Prairie* (9) Grapevine (1) Haslet (1) Hurst (1) Keller (2) North Richland Hills (1) Pantego (3) Southlake (1) Unincorporated (2)

* May include data from outside Tarrant County

Table 1. MLE⁽¹⁾ and VI⁽²⁾ for County Quadrants, Weeks 24 and 25

	County Quadrant	# Gravid Traps	Ave F Culex spp	Positive Pools	MLE (Lower-Upper Limit)	VI
Week 24	Northeast	55	32.5	2	1.54 (0.27-5.08)	0.05
	Northwest	31	83.1	0	0.00 (0.00-3.28)	0.00
	Southeast	37	48.7	4	3.81 (1.24-9.26)	0.19
	Southwest	21	48.0	0	0.00 (0.00-5.89)	0.00
Week 25	Northeast	56	35.7	6	4.36 (1.79-9.13)	0.16
	Northwest	24	64.5	2	2.16 (0.40-7.03)	0.14
	Southeast	38	28.4	3	3.16 (0.84-8.61)	0.09
	Southwest	22	41.6	1	1.40 (0.08-6.83)	0.06

Data source: Tarrant County Public Health

1. MLE= Maximum Likelihood or the estimate of the mosquito infection rate per mosquito species.

2. VI= Vector Index which is a measure of infectivity accounting for vector species composition, vector species population density, and proportion of vector population infected with WNV
 Averages, MLE, and limits will be given for species with identified infection rates only and only for the latest two week. MLE, Lower and Upper Limits are based on a 95% confidence interval. All data in this table is based on collection date. Calculated using a Maximum Likelihood Estimation (MLE). Biggerstaff, Brad J. PooledInfRate, Version 4.0: a Microsoft® Office Excel® Add-In to compute prevalence estimates from pooled samples. Centers for Disease Control and Prevention, Fort Collins, CO, U.S.A., 2009

Cumulative Data for the Tarrant County Region, Weeks 22-25

Week	May 31- June 6	June 7 - June 13	June 14 - June 20	June 21 - June 27	YTD
MMWR Week	22	23	24	25	
Total Number of gravid traps set in Tarrant Region	166	160	173	162	1453
Average number of Culex spp per gravid trap	96.8	60.0	49.1	39.7	65.4
Number of mosquito pools tested ¹ (NTRL; non-NTRL)	138;20	131;20	144;25	137;20	1161;254
Number of positive mosquito pools (NTRL; non-NTRL) ¹	5;0	5;1	6;2	11;2	33;9
WNV infection rate per 1,000 Culex spp ²	1.08	1.31	1.50	3.07	
Weekly vector index ³	0.102	0.075	0.072	0.120	
Total BG Sentinel traps set in Tarrant Region	26	28	23	32	214
Average number of female Aedes aegypti and Aedes albopictus per BG trap	5.1	9.1	7.8	7.0	5.0

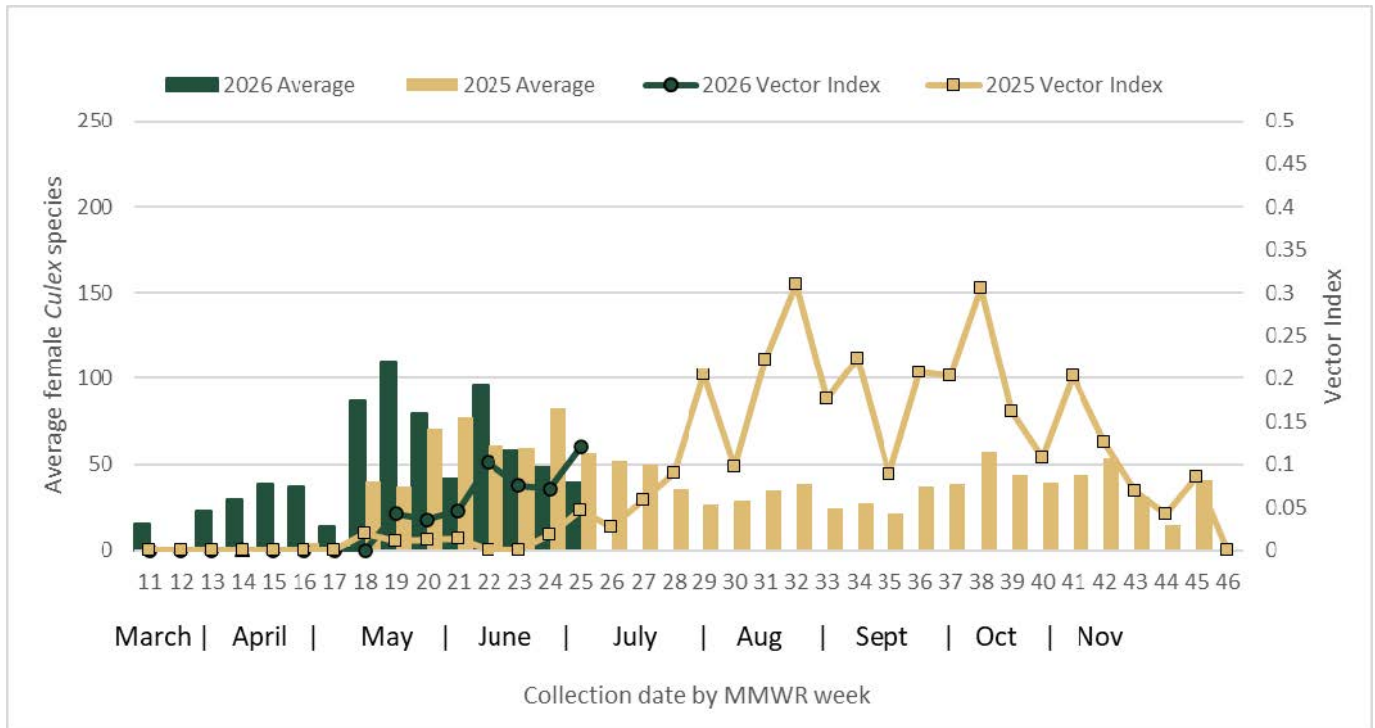
¹ Based on mosquito collection date; NTRL = North Texas Regional Laboratory

² Calculated using a Maximum Likelihood Estimation (MLE). Biggerstaff, Brad J. PooledInfRate, Version 4.0: a Microsoft® Office Excel® Add-In to compute prevalence estimates from pooled samples. Centers for Disease Control and Prevention, Fort Collins, CO, U.S.A., 2009 Culex spp. includes pools of both Cx restuans and Cx quinquefasciatus. These MLEs are calculated separately, per species and added together as per instructions by CDC.

³ Vector Index is a measure of infectivity accounting for vector species composition, vector species population density, and proportion of vector population infected with WNV

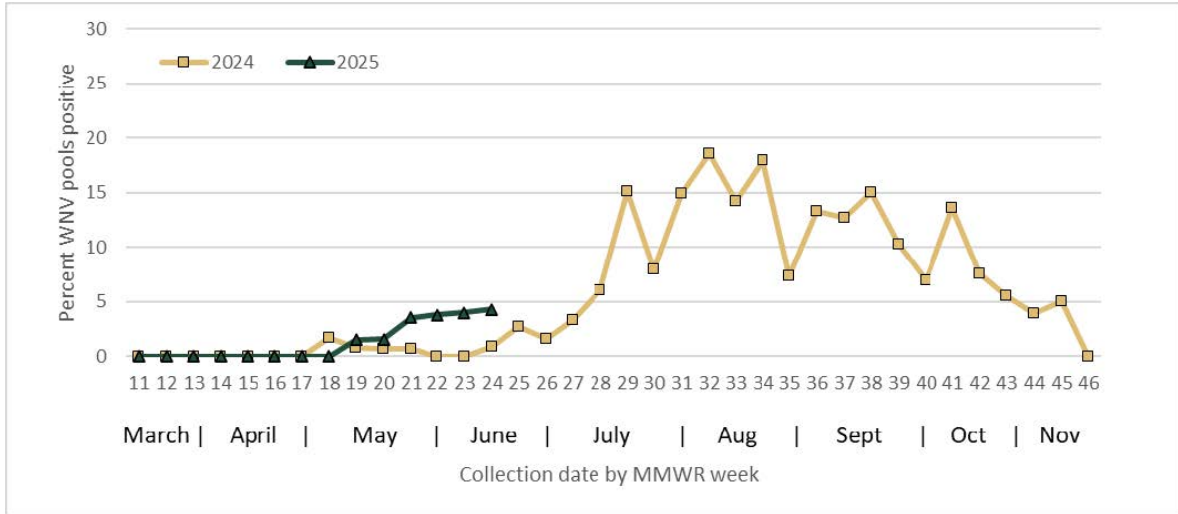
Note: Infection rate and vector index calculations now includes pools from outside laboratories; Data subject to change due to on-going case investigations, mosquito collection, and testing. Data source: Tarrant County Public Health

Figure 1. Average Number of Female Culex Species Per Trap and Vector Index by Collection Date, Tarrant County, 2025-2026



Data Source: Tarrant County Public Health

Figure 2. Percentage of Mosquito Pools Positive for WNV by Collection Date, Tarrant County, 2025-2026



Data Source: Tarrant County Public Health

Table 3. North Texas Arbovirus Activity as Reported by Texas DSHS on June 30, 2026

North Texas Counties	WNV					CHIKV		DENV		SLEV		Zika	
	Positive Mosquito Pools	Human Cases			Positive Mosquito Pools	Human Cases	Positive Mosquito Pools	Human Cases	Positive Mosquito Pools	Human Cases	Positive Mosquito Pools	Human Cases	
Collin	3	0	WNF	0	WNND	0	1	0	0	0	0	0	0
Dallas	72	0	WNF	0	WNND	0	0	0	0	0	0	0	0
Denton	15	0	WNF	0	WNND	0	0	0	0	0	0	0	0
Johnson	2	0	WNF	0	WNND	0	0	0	0	0	0	0	0
Tarrant	41	0	WNF	0	WNND	0	0	0	0	0	0	0	0
North Texas	133	0	WNF	0	WNND	0	1	0	1	0	0	0	0
All Texas Counties	349	1		1		0	1	0	4	0	0	0	0

*All reported CHIKV, DENV, & Zika human cases are travel-related

WNV– West Nile virus; WNF– West Nile fever; WNND– West Nile neuroinvasive disease; CHIKV– Chikungunya virus; DENV– Dengue virus; SLEV– St. Louis encephalitis virus

For Additional Information Please Visit the Links Below:

Tarrant County Public Health

- Vector Control
- Be Mosquito Free
- WNV Interactive Mapping Tool
- Eliminating Mosquito Breeding Sites
- Mosquitoes Love Water

Environmental Protection Agency

- Insect Repellent Information

Texas Department of State Health Services

- DSHS Mosquito-Borne Diseases
- DSHS West Nile Virus
- DSHS Dengue
- Arbovirus Activity Reports

Center for Disease Control and Prevention

- CDC West Nile Virus
- CDC Dengue