

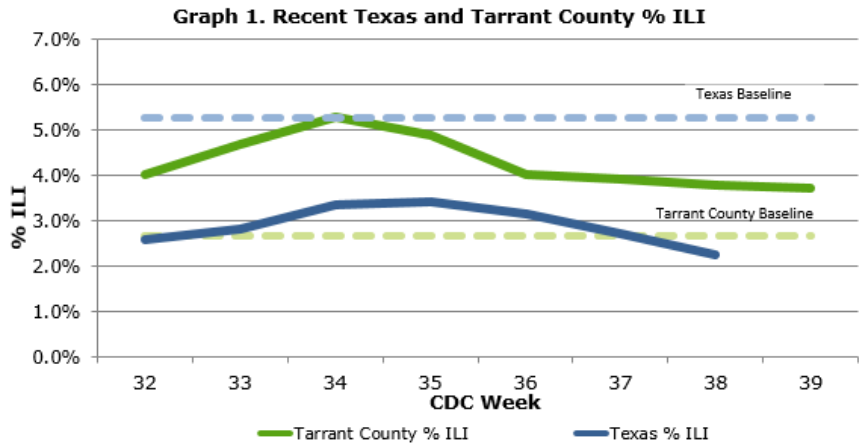
Tarrant County Public Health  
Division of Epidemiology and Health Information



Tarrant County Influenza Surveillance Weekly Report  
CDC Week 39: September 26-October 2, 2021

**Influenza Activity Code:  
County and State Levels**

<b>Tarrant County: Week 39</b>
No Activity
<b>Tarrant County: Week 38</b>
No Activity
<b>Texas: Week 38</b>
Low



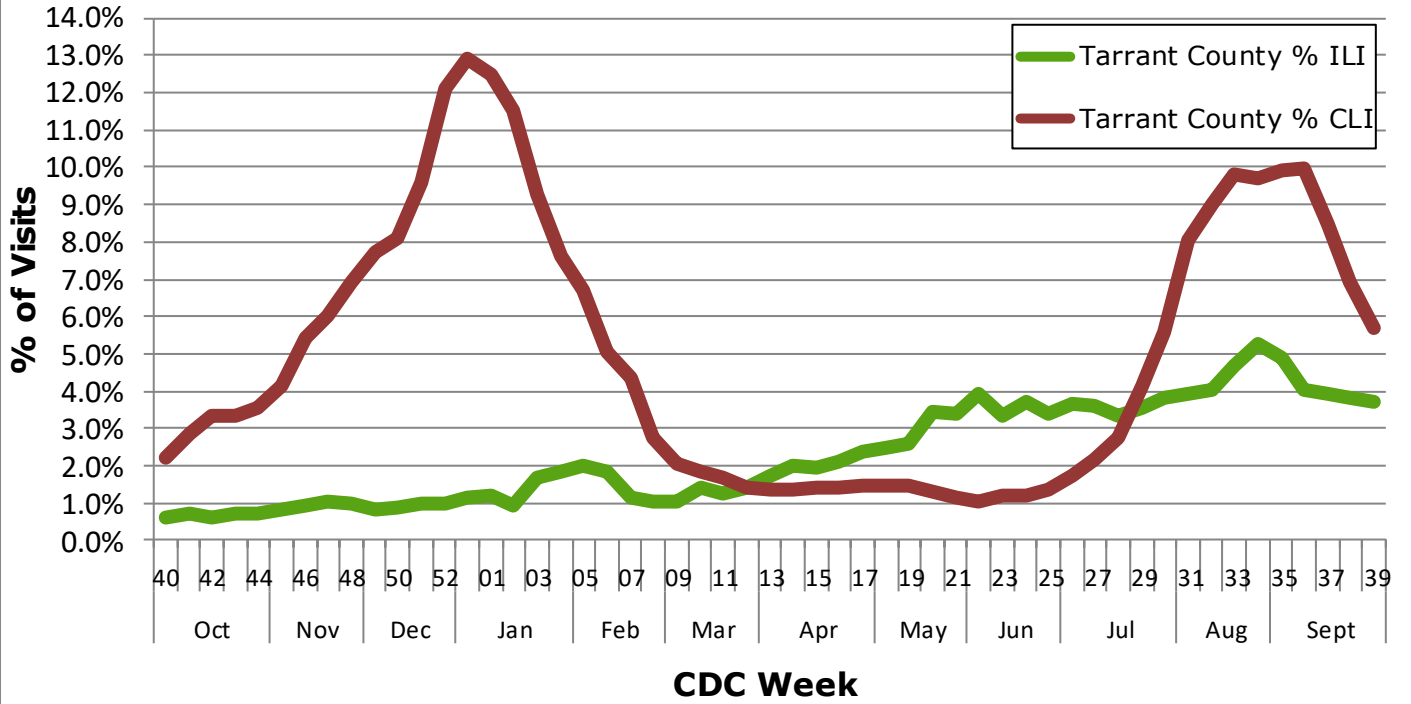
**NOTE: The COVID-19 outbreak unfolding in the United States may affect healthcare seeking behavior which in turn would impact ILI data.**

**Respiratory Virus Activity Summary**

- The percentage of reported influenza-like illness (ILI) in Tarrant County decreased from 3.8% in Week 38 to 3.7% in Week 39 and is currently above the 2020-2021 Tarrant County baseline (2.7%).
- Due to the closing of the traditional school year, data on student absenteeism, absenteeism due to ILI, and nurses' office visits due to ILI will not be reported until the beginning of the 2021-2022 flu season in October 2021.
- The percentage of rapid flu test positives in Tarrant County increased from 0.0% in Week 38 to 0.8% in Week 39.
- Based on data from the Electronic Surveillance System for the Early Notification of Community-based Epidemics, the percentage of patients hospitalized following ER visits who were diagnosed with influenza was below 0.1% in week 39.
- During the 2020-2021 influenza season, as of Week 39, 0 Tarrant County influenza-associated pediatric deaths have been reported. As of Week 38, 0 influenza-associated pediatric deaths have been reported in Texas, with a total of 1 reported in the United States for 2020-2021.
- During the 2020-2021 influenza season, 0 influenza outbreaks have been reported in Tarrant County within institutions in Tarrant County.
- As of week 26, the North Texas Regional Laboratory has resumed testing for respiratory viruses other than influenza and SARS-CoV-2. Since last report, 22 surveillance specimens were tested. The following types and number of viruses were detected in these specimens: SARS-CoV-2 (6), Rhinovirus (3), RSV (2), and Rhinovirus/Adenovirus co-infection (1). Cumulatively this season, the North Texas Regional Laboratory at Tarrant County Public Health has tested 966 surveillance specimens and of these, 0 have been positive for influenza and 215 have been positive for SARS-CoV-2.
- In Texas during Week 38, the proportion of outpatient visits for ILI, 2.3%, was below the state baseline of 5.3%.
- Nationally during Week 38, 0.1% of specimens tested and reported to the CDC were positive for influenza. The proportion of outpatient visits for ILI (1.9%) was below the national baseline (2.6%). The proportion of deaths in Week 38 attributed to pneumonia, influenza, and COVID-19 from the National Center for Health Statistics (20.9%) was above the epidemic threshold (5.6%).

## Influenza Like Illness (ILI) and COVID-19 Like Illness (CLI)

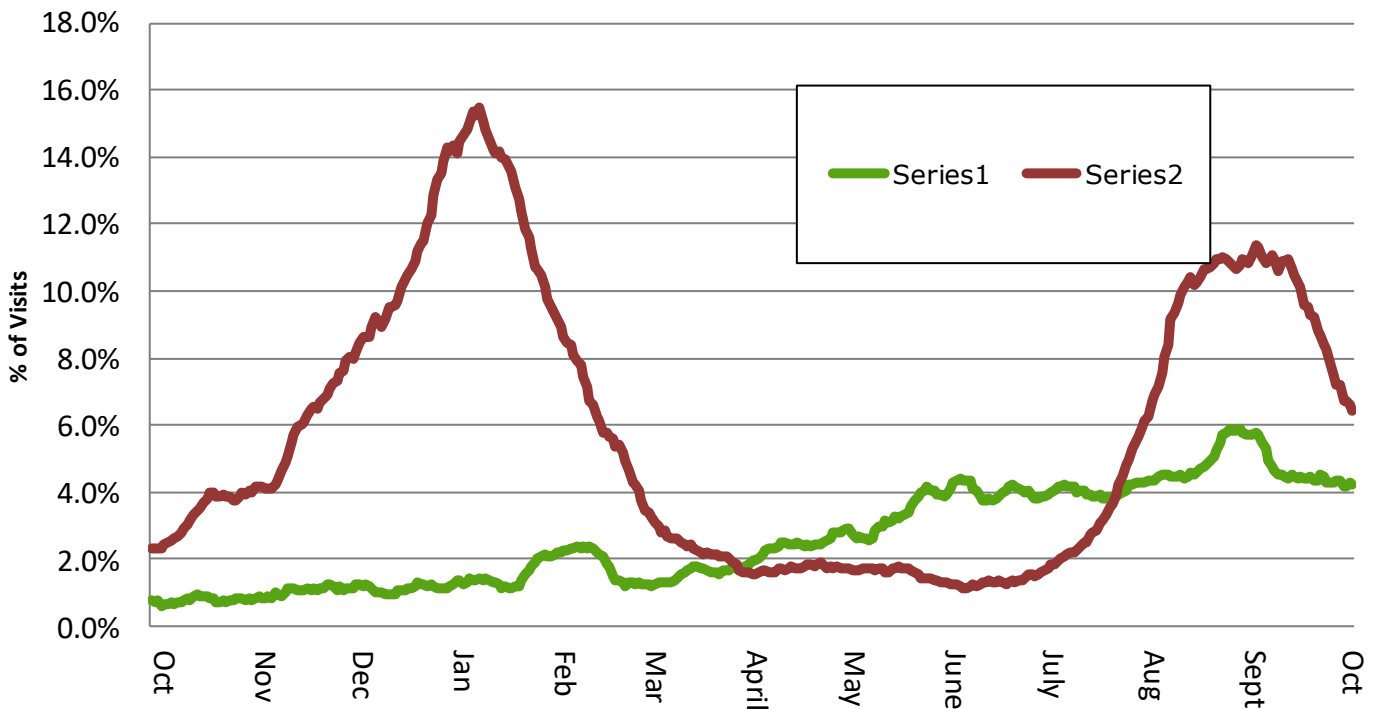
### Graph 2. Tarrant County % ILI and % CLI



COVID-19-like illness is defined as visits with a mention of Fever AND (Cough OR Shortness of Breath OR Difficulty Breathing) AND NOT (Influenza Diagnosis). These counts do not reflect confirmed diagnosis of COVID-19.

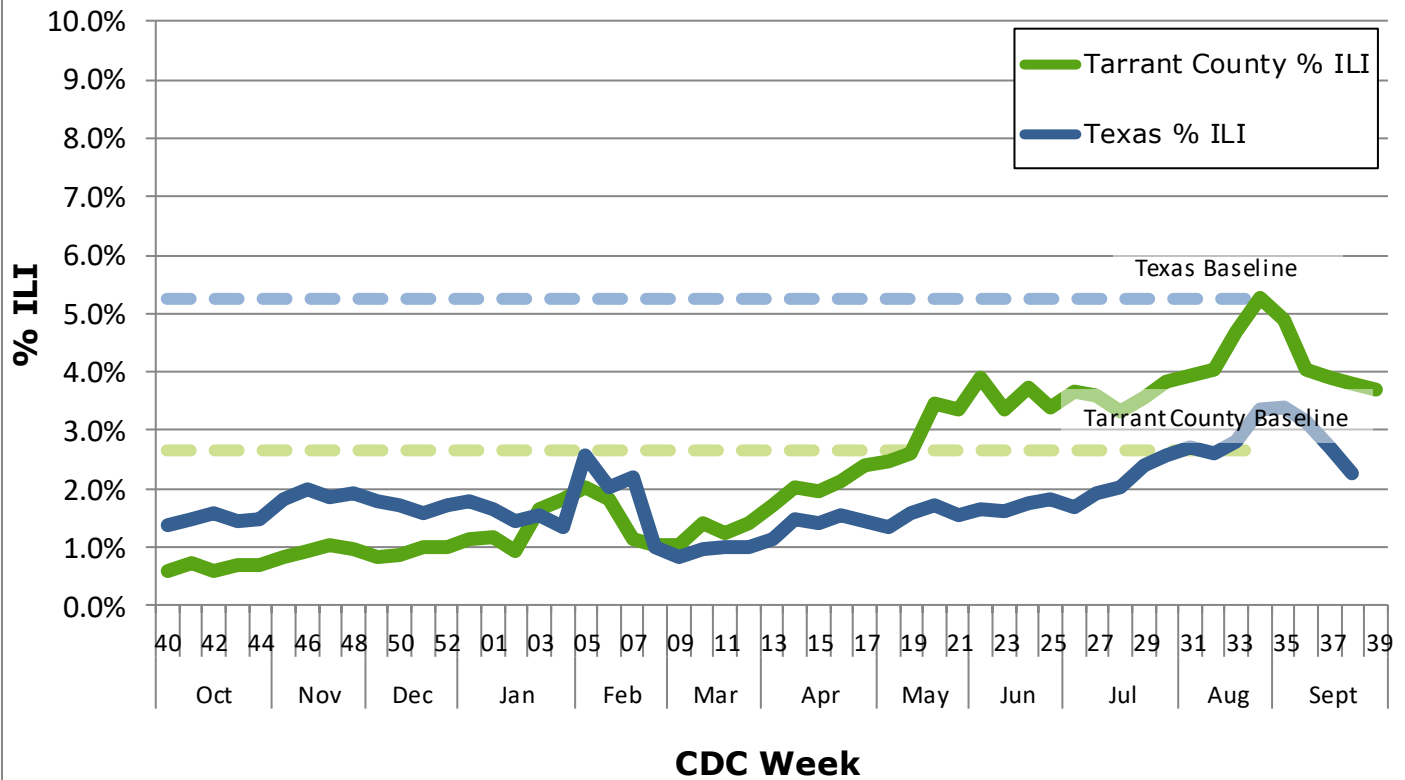
*NOTE: Tarrant County ILI and CLI activity are assessed using information available from the Electronic Surveillance System for the Early Notification of Community-based Epidemics (ESSENCE). ILI and CLI visits are determined by identifying key terms and codes within the chief complaint field (i.e. the patients stated reason for visit), and diagnosis code field (i.e. ICD-9-CM and ICD-10-CM codes).*

### Graph 3. 7 Day Average of the % of ED Visits for ILI and CLI



## Influenza Like Illness (ILI) and School Absenteeism

### Graph 4. Texas and Tarrant County % ILI



In Week 39, 3.7% of visits to health care providers were due to ILI. ILI levels are currently above the county established baseline of 2.7% and are higher than the state of Texas levels from the week prior.

### Table 1. Influenza Test Results, Tarrant County

CDC Week Number	37	38	39
# Influenza Tests Performed	299	761	638
% Influenza Positive	1.0%	0.0%	0.8%
# Influenza A Positive	1	0	0
% Influenza A Positive	33.3%	0.0%	0.0%
# Influenza B Positive	2	0	5
% Influenza B Positive	66.7%	0.0%	100.0%
# Non-differentiated Positive	0	0	0
% Non-differentiated Positive	0.0%	0.0%	0.0%

NOTE: Tarrant County influenza test results are reported weekly by influenza surveillance participants. For CDC Week 35, rapid influenza test results were reported by 10 hospitals and 1 college/university.

## Influenza and SARS-CoV-2 Test Results

**Table 2. North Texas Regional Laboratory: Respiratory Virus Results<sup>1</sup>**

	Current Week	2020-2021 Season
<b>Number of Specimens Tested</b>	<b>22</b>	<b>966</b>
Positive Specimens	6 (27.3%)	215 (22.3%)
<b>Influenza A</b>	0	0
Influenza A H1	-	-
Influenza A H3	-	-
Influenza A, Inconclusive subtype	-	-
Influenza A, Unsubtypeable <sup>2</sup>	-	-
<b>Influenza B</b>	0	0
Influenza B Yamagata <sup>3</sup>	-	-
Influenza B Victoria <sup>3</sup>	-	-
Influenza B, Inconclusive	-	-
<b>SARS-CoV-2</b>	6 (100.0%)	215 (100.0%)
<b>Inconclusive<sup>4</sup></b>	0	2

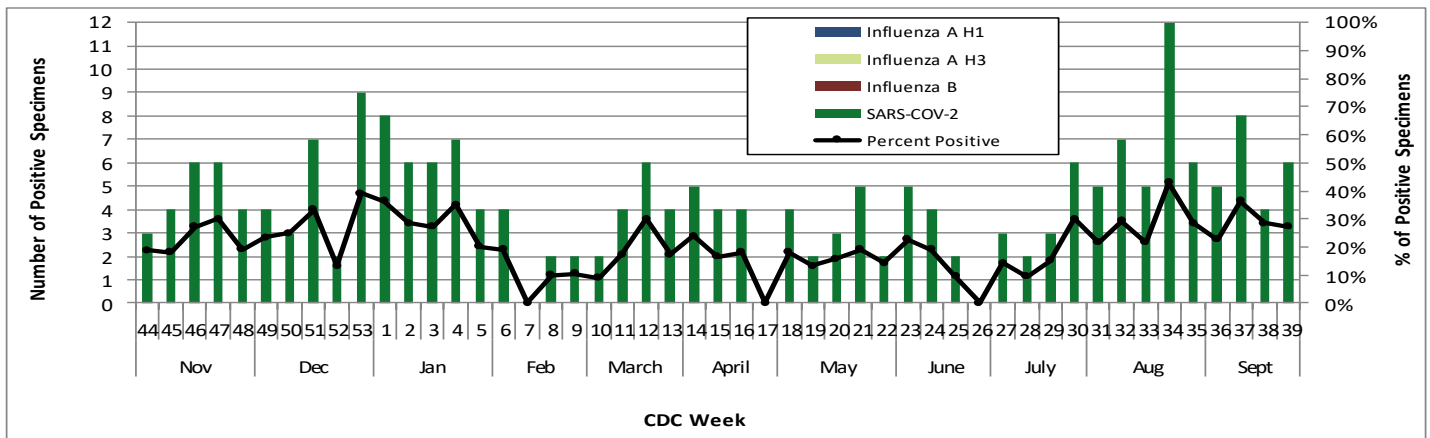
<sup>1</sup> Laboratory results based on real-time PCR analysis; information is for the 2020-2021 season.

<sup>2</sup> Influenza A subtype not determined; further analysis pending

<sup>3</sup> Influenza B genotyping is only included in current week column if genotyping occurred in the same week as original PCR testing.

<sup>4</sup> Inconclusive for influenza A and influenza B; not included in positive specimens count.

**Graph 6. North Texas Regional Laboratory: Influenza and SARS-CoV-2 Virus Results<sup>1</sup>**

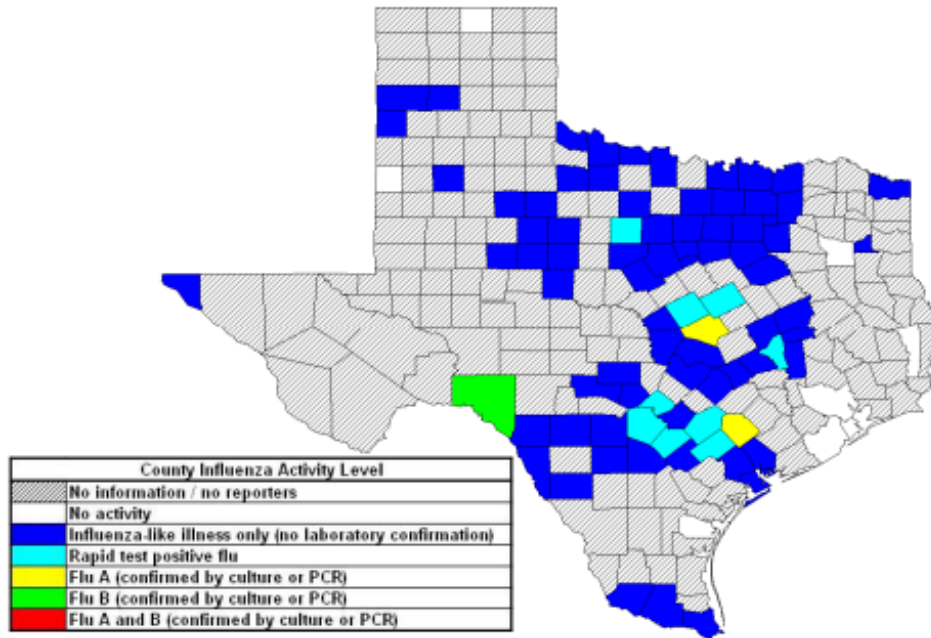


	Current Week	June 27, 2021— present
<b>Number of Specimens Tested</b>	<b>19</b>	<b>258</b>
Positive Specimens	11 (57.9%)	176 (68.2%)
<b>Influenza A</b>	0 (0.0%)	0 (0.0%)
<b>Influenza B</b>	0 (0.0%)	0 (0.0%)
<b>SARS-CoV-2</b>	5 (45.5%)	45 (25.6%)
<b>Respiratory Syncytial Virus</b>	2 (18.2%)	54 (30.7%)
<b>Adenovirus</b>	1 (9.1%)	11 (6.3%)
<b>Human Metapneumovirus</b>	0 (0.0%)	0 (0.0%)
<b>Parainfluenza-1</b>	0 (0.0%)	0 (0.0%)
<b>Parainfluenza-2</b>	0 (0.0%)	3 (1.7%)
<b>Parainfluenza-3</b>	0 (0.0%)	13 (7.4%)
<b>Rhinovirus</b>	4 (36.4%)	48 (27.3%)
<b>Inconclusive<sup>4</sup></b>	0 (0.0%)	0 (0.0%)

The NTRL resumed testing for respiratory viruses other than influenza and SARS-CoV-2 for week 26 beginning June 27, 2021.  
**NOTE:** Percentages do not add up to 100% due to co-infections. 19 specimens tested positive with a co-infection: Parainfluenza-3/Rhinovirus (2), RSV/Adenovirus (3), Parainfluenza-3/RSV (4), Rhinovirus/RSV (5), Parainfluenza-2/Parainfluenza-3 (1), Rhinovirus/Adenovirus (2), SARS-CoV-2/Parainfluenza-3 (1), SARS-CoV-2/Adenovirus (1), SARS-CoV-2/RSV (1)

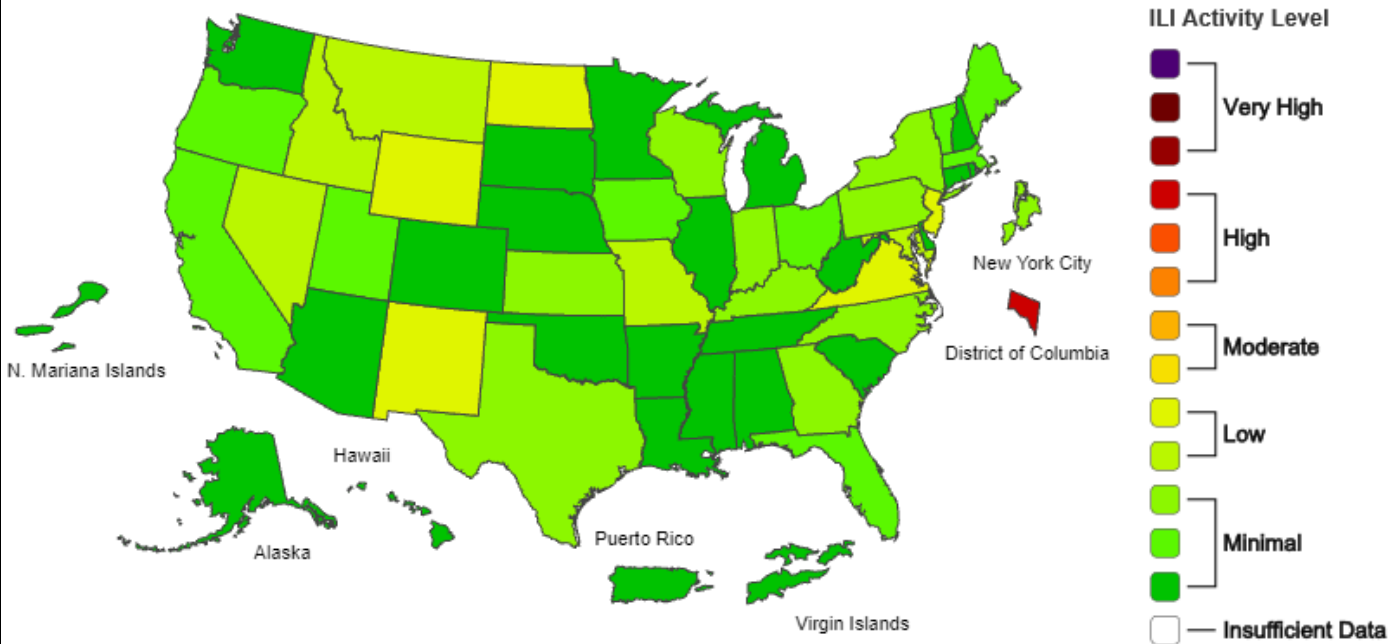
## Texas and National Influenza and ILI Activity

**Map 1: Texas County Specific Influenza Activity, CDC Week 38**



Influenza activity level corresponds to current MMWR week only and does not reflect previous weeks' activity. The majority of influenza cases are not reportable by law to the Texas Department of State Health Services. This map contains data from sentinel sites and does not represent all influenza cases in the state. Positive laboratory results are reported according to specimen collection date or date received in the lab if the former is unknown. <https://www.dshs.texas.gov/IDCU/disease/influenza/surveillance/2020-2021.aspx>

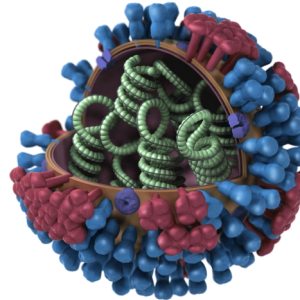
**Map 2: ILINet Activity Indicator Map, CDC Week 38**



Data collected in ILINet are used to produce a measure of ILI activity by state. Activity levels are based on the percent of outpatient visits in a state due to ILI and are compared to the average percent of ILI visits that occur during spring and fall weeks with little or no influenza virus circulation. This map uses the proportion of outpatient visits to health care providers for influenza-like illness to measure the ILI activity level within a state. It does not, however, measure the extent of geographic spread of flu within a state. Therefore, outbreaks occurring in a single city could cause the state to display high activity levels. Data collected in ILINet may disproportionately represent certain populations within a state, and therefore, may not accurately depict the full picture of influenza activity for the whole state. <http://www.cdc.gov/flu/weekly/>

**Tarrant County Public Health  
Influenza Surveillance  
Epidemiology and Health Information**

**1101 South Main Street, Suite 2200  
Fort Worth, TX 76104**



**Veerinder (Vinny) Taneja, MBBS; MPH**  
*Director, Tarrant County Public Health*

*The Tarrant County Influenza  
Surveillance Weekly Report* is  
available on the Tarrant County Public  
Health web site at:

**[flu.tarrantcounty.com](http://flu.tarrantcounty.com)**

**If you have questions or comments  
regarding influenza surveillance,  
please contact:**

Laura Lockwood, MPH  
*Influenza Surveillance Specialist*  
[LBlockwood@tarrantcounty.com](mailto:LBlockwood@tarrantcounty.com)

**NOTE:**

Influenza-like Illness (ILI) is defined as fever (temperature  $\geq 100^{\circ}\text{F}$ ) plus a cough OR a sore throat, in the absence of a known cause other than influenza.

Tarrant County reporting quadrants consist of Northwest, Northeast, Southwest and Southeast regions within the boundaries of Interstate 35 and Interstate 30.

Tarrant County ILI baselines were determined using a similar method as the Centers for Disease Control Prevention Regional ILI baselines and Texas Department of State Health Services Texas baseline. Regional ILI baselines are determined by the Centers for Disease Control and Prevention and can be accessed at <http://www.cdc.gov/flu/weekly/overview.htm>

Additional information regarding Tarrant County, Texas and national ILI activity can be accessed at [flu.tarrantcounty.com](http://flu.tarrantcounty.com)

<https://www.dshs.texas.gov/IDCU/disease/influenza/surveillance/2020-2021.aspx>

<http://www.cdc.gov/flu/weekly/>

Russ Jones, MPH  
Division Manager & Chief Epidemiologist  
Epidemiology and Health Information  
Tarrant County Public Health

**Main Epidemiology Division Number : (817) 321-5350  
Disease Reporting Fax Number: (817) 850-2366**